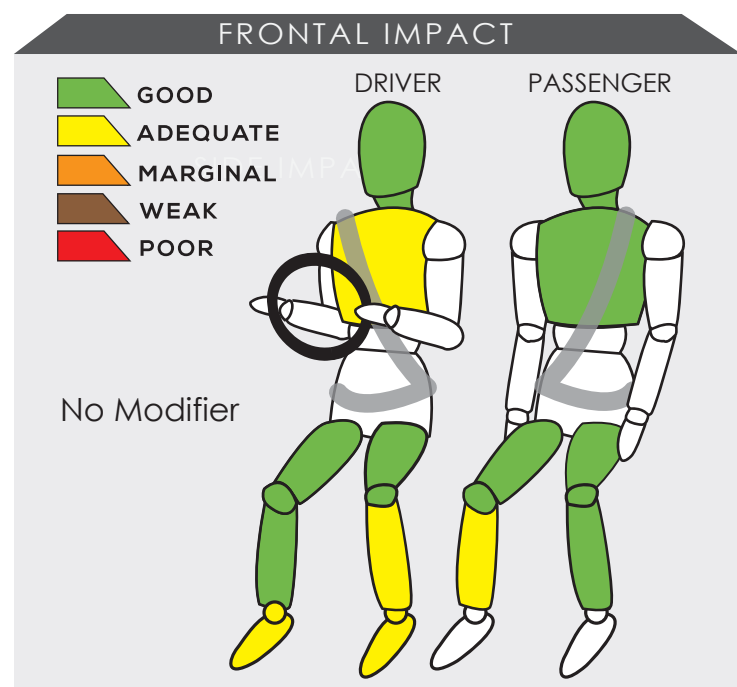


JETOUR T1

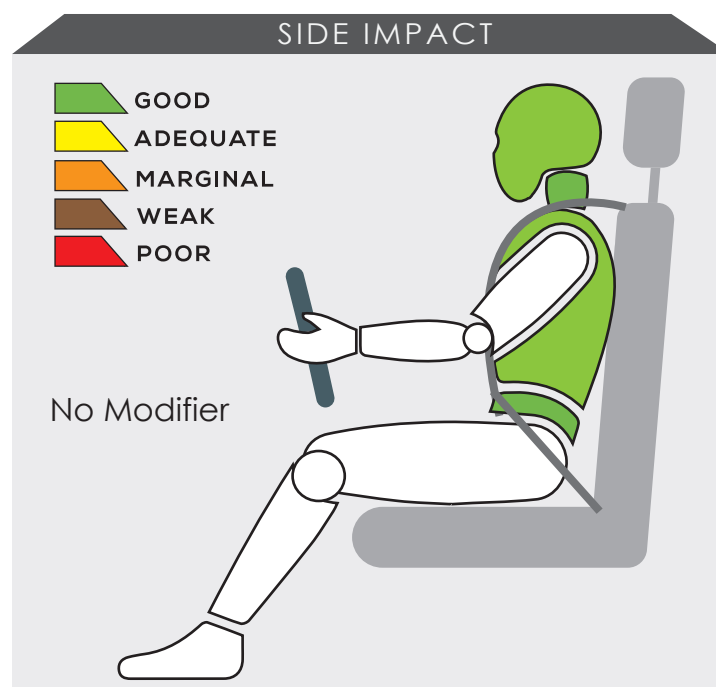


Variant 2	Year Built 2025
Model Year 2025	Vehicle Category SUV
Engine Capacity 2.0 TD	Kerb Mass 1811 kg
No. of Airbags 6	Test Lab CAERI

TESTED VARIANT ORIGIN	CHINA	FOR	BRUNEI, INDONESIA, MALAYSIA, SINGAPORE, THAILAND
OTHER ASEAN PRODUCTION (ALL VARIANTS)	MALAYSIA	FOR	BRUNEI, INDONESIA, MALAYSIA, SINGAPORE, THAILAND



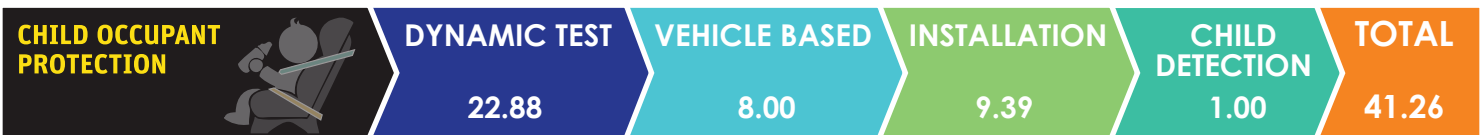
Data obtained from the test dummy showed there were adequate protection to the driver's chest, left lower leg and feet. In addition, the passenger's right lower leg also received adequate protection in the test.



The performance of HPT was confirmed with additional deployment test and its score was determined by Fitment Rating System (FRS).

SAFETY ITEMS (PASSIVE)

ITEMS		REGION	ASEAN
Airbags	Driver		Standard on all variants
	Passenger		Standard on all variants
	Side (2)		Standard on all variants
	Curtain (2)		Standard on all variants
	Knee		Not Available
Seatbelts	Retractor Pre-tensioner & Load Limiter for Driver		Standard on all variants
	Retractor Pre-tensioner & Load Limiter for Passenger		Standard on all variants



DYNAMIC TEST ASSESSMENT

18-MONTH-OLD CHILD

Restraint : Joie Every Stage Fx
Facing : Rearward Facing
Installation : Adult Seatbelt

Frontal Impact : 6.876
Side Impact : 4.000
Total Performance : 10.876

3-YEAR-OLD CHILD

Restraint : Joie Every Stage Fx
Facing : Rearward Facing
Installation : Adult Seatbelt

Frontal Impact : 8.000
Side Impact : 4.000
Total Performance : 12.000

CRS INSTALLATION ASSESSMENT

CRS	DIRECTION	SEAT POSITION						
		FRONT	2ND ROW			3RD ROW		
		PASSENGER	LEFT	CENTRE	RIGHT	LEFT	CENTRE	RIGHT
Peg-Perego Primo Viaggio SL	Rwd	EXEMPT	FAIL	PASS	FAIL	N/A	N/A	N/A
Joie Stages	Rwd	EXEMPT	PASS	PASS	PASS	N/A	N/A	N/A
Joie Stages	Fwd	PASS	PASS	PASS	PASS	N/A	N/A	N/A
Combi Buon Junior Air	Fwd	PASS	FAIL	FAIL	FAIL	N/A	N/A	N/A
Maxi Cosi Cabriofix + Family Fix	Rwd	EXEMPT	PASS	EXEMPT	PASS	N/A	N/A	N/A
Joie Every Stage Fx	Fwd	EXEMPT	PASS	EXEMPT	PASS	N/A	N/A	N/A
Joie Every Stage Fx	Rwd	EXEMPT	PASS	FAIL	PASS	N/A	N/A	N/A
Maxi Cosi Titan Pro	Fwd	EXEMPT	PASS	EXEMPT	PASS	N/A	N/A	N/A
Britax KidFix 2 R	Fwd	PASS	PASS	PASS	PASS	N/A	N/A	N/A
Joie Every Stage Fx*	Rwd	EXEMPT	PASS	FAIL	PASS	N/A	N/A	N/A
Joie Every Stage Fx*	Rwd	EXEMPT	PASS	FAIL	PASS	N/A	N/A	N/A

PASS : Install without problem, FAIL : Safety critical problem, EXEMPT : Installation not allowed, N/A : Not available
*Manufacturer's selection



ITEMS	ASEAN
--------------	--------------

Effective Braking & Avoidance
--

Anti-lock Braking System	Standard on all variants
Electronic Stability Control	Standard on all variants

Seatbelt Reminders

Driver	Standard on all variants
Front Passenger	Standard on all variants
Rear Passengers	Standard on all variants
Rear Seat Occupant Detection	Standard on all variants

Autonomous Emergency Braking

City	Available as optional
Inter-Urban	Available as optional
Pedestrian	Available as optional

Advanced Safety Assist Technologies
--

Lane Departure Warning System	Available as optional
Forward Collision Warning System	Available as optional
Lane Keep Assist	Available as optional

AUTONOMOUS EMERGENCY BRAKING ASSESSMENT
--

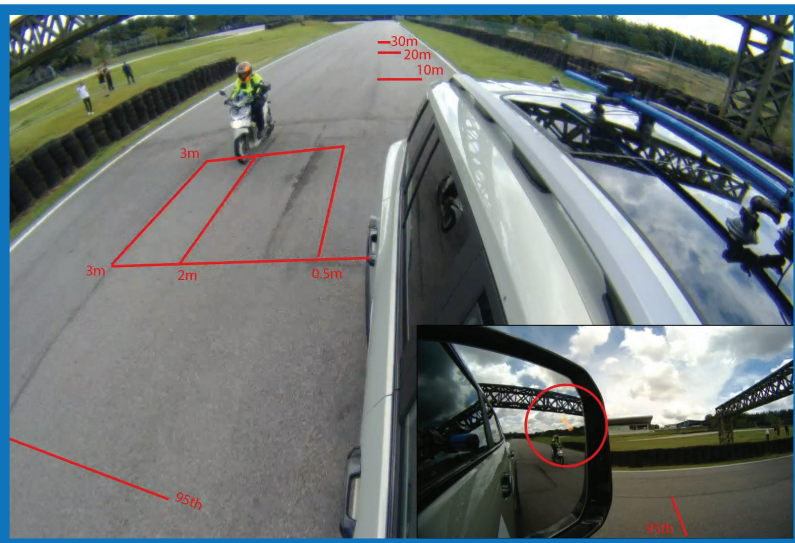


ASEAN NCAP introduces the Autonomous Emergency Braking (AEB) system functionality assessment in the 2021-2025 protocol. In the protocol, ASEAN NCAP assessed the functionality and effectiveness of AEB City (car-to-car rear stationary) and AEB Inter-Urban (car-to-car rear moving) systems fitted inside the vehicle in performing emergency braking at several speeds against another preceding vehicle. The Jetour T1 is equipped with both the AEB City and Inter-Urban systems as optional across all its variants. In this assessment, ASEAN NCAP confirms the technologies have functioned according to the ASEAN NCAP requirements.

MOTORCYCLIST SAFETY 	BLIND SPOT DETECTION	REAR VISUALIZATION	HEADLIGHT	PEDESTRIAN	ADVANCED MST	TOTAL
	8.00	0.00	1.00	2.00	2.00	13.00

ITEMS	ASEAN
Blind Spot Detection	
Nearside	Standard on all variants
Offside	Standard on all variants
Rear Visualization	
Advanced Rear Visualization	Not available
Headlight	
Auto High Beam	Available as optional
Pedestrian	
Pedestrian Protection	Standard on all variants
Advanced Motorcyclist Safety Technology	
AEB for Motorcycle	Available as optional

BLIND SPOT DETECTION ASSESSMENT




Starting from the 2017-2020 protocol, ASEAN NCAP introduced an assessment on the functionality of Blind Spot Technology fitted inside the assessed vehicle. ASEAN NCAP continues the assessment under the new Motorcyclist Safety pillar for the 2021-2025 protocol. The new Jetour T1 is equipped with Blind Spot Detection (BSD) on both sides of the vehicle as standard fitment across all its variants. In the assessment, ASEAN NCAP confirms the technology has functioned according to the ASEAN NCAP requirements on both sides of the vehicle.



OVERALL RATING

The new Jetour T1 is the latest model from the Jetour brand that underwent ASEAN NCAP assessment under the 2021-2025 protocol. The SUV is equipped with 6 airbags, Electronic Stability Control (ESC), Anti-lock Braking System (ABS), Seatbelt Reminder System (SBR) for both frontal and rear occupants, rear seat occupant detection, Blind Spot Detection (BSD) for both the driver and passenger side of the vehicle, Pedestrian Protection (PP), Child Presence Detection (CPD) and ISOFIX for child seats as standard features in all its variants. In addition, safety technologies comprising Autonomous Emergency Braking (AEB) City, AEB Inter-Urban, AEB Pedestrian, Lane Departure Warning (LDW), Forward Collision Warning (FCW), Lane Keep Assist (LKA), Auto High Beam (AHB) and AEB for Motorcycle are fitted as optional equipment. The new Jetour T1 performed well under the current 2021-2025 ASEAN NCAP assessment protocol by obtaining an overall score of 87.67 points. Based on the achieved scores have made the model eligible to be awarded with 5-Star ASEAN NCAP rating.

	AOP			COP			SAFETY ASSIST			MS			2021 - 2025 ASEAN NCAP RATING 5
	Item	Point	Max	Item	Point	Max	Item	Point	Max	Item	Point	Max	
	ODB	14.47	16.00	FRONTAL	14.88	16.00	EBA	6.00	6.00	BSD/BSV	8.00	8.00	
	SIDE	8.00	8.00	SIDE	8.00	8.00	SBR	6.00	6.00	ARV	-	4.00	
	HPT Evaluation	8.00	8.00	Installation	9.39	12.00	AEB City	1.25	2.50	AHB	1.00	2.00	
				Vehicle Based CPD	8.00	13.00	AEB Inter-Urban	1.75	3.50	Ped. Protection	2.00	2.00	
					1.00	2.00	Advanced SATs	3.00	3.00	Advanced MST*	2.00	2.00	
Score		30.47	32.00		41.26	51.00		18.00	21.00		13.00	16.00	
Normalized Score		0.95			0.81			0.86			0.8125		
Weighting		40%			20%			20%			20%		
Weighted Score		38.09			16.18			17.14			16.25		OVERALL SCORE
Maximum Star Rating		5			5			5			5		87.67
													5

*Bonus Point