










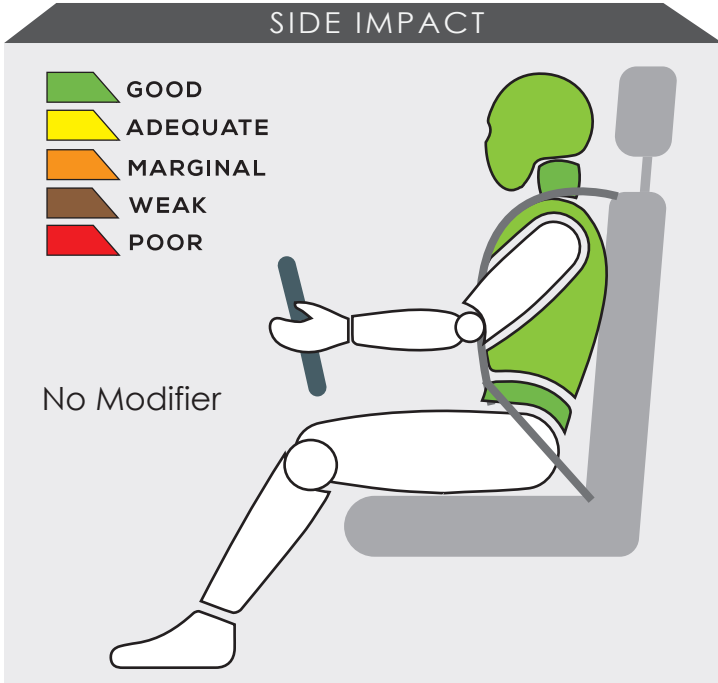
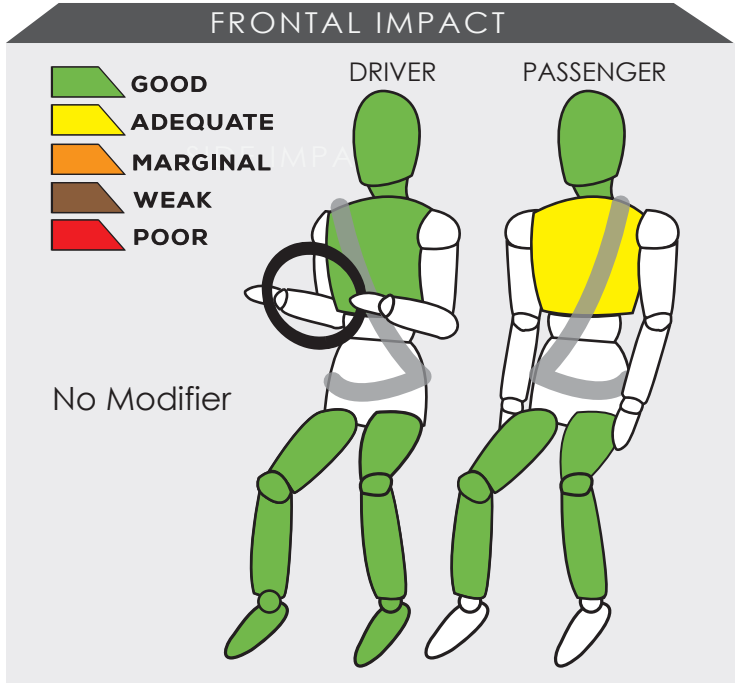
CHERY iCAUR V23



 Variant H	 Year Built 2025
 Model Year 2025	 Vehicle Category SUV
 Motor Power 155kW	 Kerb Mass 1820 kg
 No. of Airbags 6	 Test Lab  CAERI

TESTED VARIANT ORIGIN	CHINA	FOR	BRUNEI, INDONESIA, MALAYSIA, PHILIPPINES, SINGAPORE, THAILAND, VIETNAM
OTHER ASEAN PRODUCTION (ALL VARIANTS)	MALAYSIA	FOR	BRUNEI, INDONESIA, MALAYSIA, PHILIPPINES, SINGAPORE, THAILAND, VIETNAM

ADULT OCCUPANT PROTECTION 	FRONTAL IMPACT 15.77	SIDE IMPACT 8.00	HEAD PROTECTION TECHNOLOGY 8.00	TOTAL 31.77
---	--------------------------------	----------------------------	---	-----------------------




The SUV's frontal occupant compartment remained stable in the frontal offset test. Data obtained from the test dummy showed there was adequate protection to the passenger's chest.

The performance of HPT was confirmed with additional deployment test and its score was determined by Fitment Rating System (FRS).

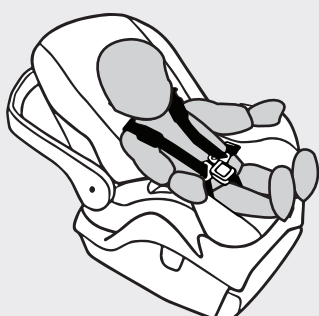

SAFETY ITEMS (PASSIVE)

ITEMS		REGION	ASEAN
Airbags	Driver		Standard on all variants
	Passenger		Standard on all variants
	Side (2)		Standard on all variants
	Curtain (2)		Standard on all variants
	Knee		Not Available
Seatbelts	Retractor Pre-tensioner & Load Limiter for Driver		Standard on all variants
	Retractor Pre-tensioner & Load Limiter for Passenger		Standard on all variants

CHILD OCCUPANT PROTECTION	DYNAMIC TEST	VEHICLE BASED	INSTALLATION	CHILD DETECTION	TOTAL
	24.00	9.00	9.50	0.00	42.50

DYNAMIC TEST ASSESSMENT



18-MONTH-OLD CHILD		3-YEAR-OLD CHILD	
Restraint	: Joie i Spin 360 R	Restraint	: Joie i Spin 360 R
Facing	: Rearward Facing	Facing	: Rearward Facing
Installation	: ISOFIX & Supportleg	Installation	: ISOFIX & Supportleg
			
Frontal Impact	: 8.000	Frontal Impact	: 8.000
Side Impact	: 4.000	Side Impact	: 4.000
Total Performance	: 12.000	Total Performance	: 12.000

CRS INSTALLATION ASSESSMENT

CRS	DIRECTION	SEAT POSITION						
		FRONT	2ND ROW			3RD ROW		
		PASSENGER	LEFT	CENTRE	RIGHT	LEFT	CENTRE	RIGHT
Peg-Perego Primo Viaggio SL	Rwd	EXEMPT	PASS	PASS	PASS	N/A	N/A	N/A
Joie Stages	Rwd	PASS	PASS	FAIL	PASS	N/A	N/A	N/A
Joie Stages	Fwd	PASS	PASS	FAIL	PASS	N/A	N/A	N/A
Combi Buon Junior Air	Fwd	FAIL	FAIL	FAIL	FAIL	N/A	N/A	N/A
Maxi Cosi Cabriofix + Family Fix	Rwd	EXEMPT	PASS	EXEMPT	PASS	N/A	N/A	N/A
Joie Every Stage Fx	Fwd	EXEMPT	PASS	EXEMPT	PASS	N/A	N/A	N/A
Joie Every Stage Fx	Rwd	PASS	PASS	FAIL	PASS	N/A	N/A	N/A
Maxi Cosi Titan Pro	Fwd	EXEMPT	PASS	EXEMPT	PASS	N/A	N/A	N/A
Britax KidFix 2 R	Fwd	FAIL	PASS	FAIL	PASS	N/A	N/A	N/A
Joie i Spin 360 R*	Rwd	EXEMPT	PASS	EXEMPT	PASS	N/A	N/A	N/A
Joie i Spin 360 R*	Rwd	EXEMPT	PASS	EXEMPT	PASS	N/A	N/A	N/A

PASS : Install without problem, FAIL : Safety critical problem, EXEMPT : Installation not allowed, N/A : Not available

*Manufacturer's selection

SAFETY ASSIST		EFFECTIVE BRAKING & AVOIDANCE 6.00	SEATBELT REMINDERS 3.00	AUTONOMOUS EMERGENCY BRAKING 6.00	ADVANCED SATs 3.00	TOTAL 18.00
----------------------	--	--	-----------------------------------	---	------------------------------	-----------------------

ITEMS	ASEAN
--------------	--------------

Effective Braking & Avoidance
--

Anti-lock Braking System	Standard on all variants
Electronic Stability Control	Standard on all variants

Seatbelt Reminders

Driver	Standard on all variants
Front Passenger	Standard on all variants
Rear Passengers	Not available
Rear Seat Occupant Detection	Not available

Autonomous Emergency Braking

City	Standard on all variants
Inter-Urban	Standard on all variants
Pedestrian	Not available

Advanced Safety Assist Technologies
--

Lane Departure Warning System	Standard on all variants
Forward Collision Warning System	Standard on all variants
Lane Keep Assist	Standard on all variants

AUTONOMOUS EMERGENCY BRAKING ASSESSMENT
--

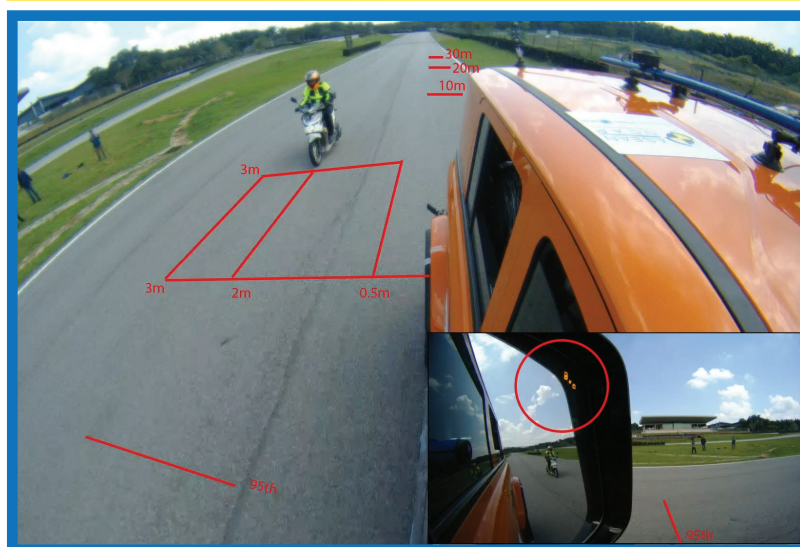


ASEAN NCAP introduces the Autonomous Emergency Braking (AEB) system functionality assessment in its current 2021-2025 protocol. In the protocol, ASEAN NCAP assessed the functionality and effectiveness of AEB City (car-to-car rear stationary) and AEB Inter-Urban (car-to-car rear moving) systems fitted inside the vehicle in performing emergency braking at several speeds against another preceding vehicle. The Chery iCAUR V23 is equipped with both the AEB City and Inter-Urban systems as standard across all its variants. In this assessment, ASEAN NCAP confirms the technologies have functioned according to the ASEAN NCAP requirements.

MOTORCYCLIST SAFETY	BLIND SPOT DETECTION	REAR VISUALIZATION	HEADLIGHT	PEDESTRIAN	ADVANCED MST	TOTAL
	8.00	0.00	2.00	2.00	2.00	14.00

ITEMS		ASEAN
Blind Spot Detection		
Nearside		Standard on all variants
	Offside	Standard on all variants
Rear Visualization		
Advanced Rear Visualization		Not available
Headlight		
Auto High Beam		Standard on all variants
Pedestrian		
Pedestrian Protection		Standard on all variants
Advanced Motorcyclist Safety Technology		
AEB for Motorcycle		Standard on all variants

BLIND SPOT DETECTION ASSESSMENT



Starting from the 2017-2020 protocol, ASEAN NCAP introduced an assessment on the functionality of Blind Spot Technology fitted inside the assessed vehicle. ASEAN NCAP continues the assessment under the new Motorcyclist Safety pillar for the current 2021-2025 protocol. The new Chery iCAUR V23 is equipped with Blind Spot Detection (BSD) on both sides of the vehicle as standard fitment across all its variants. In the assessment, ASEAN NCAP confirms the technology has functioned according to the ASEAN NCAP requirements on both sides of the vehicle.

