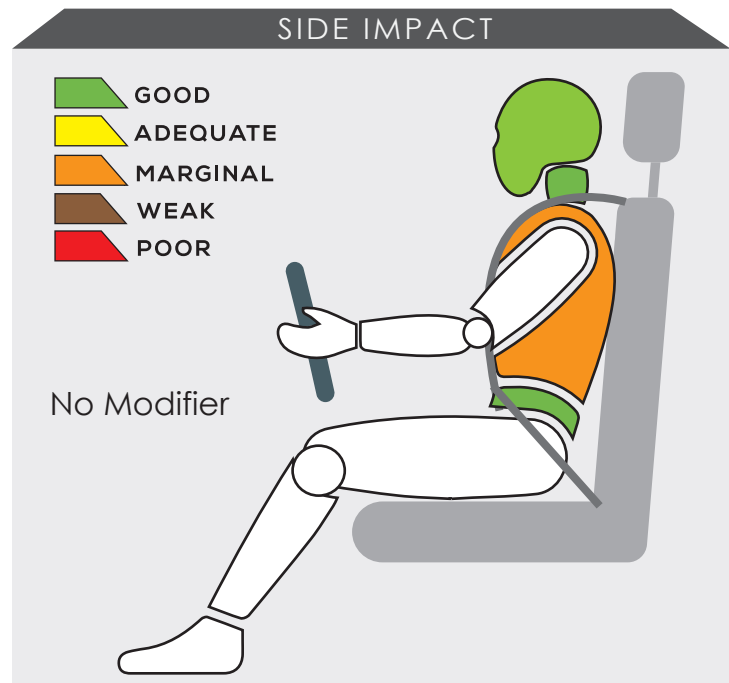
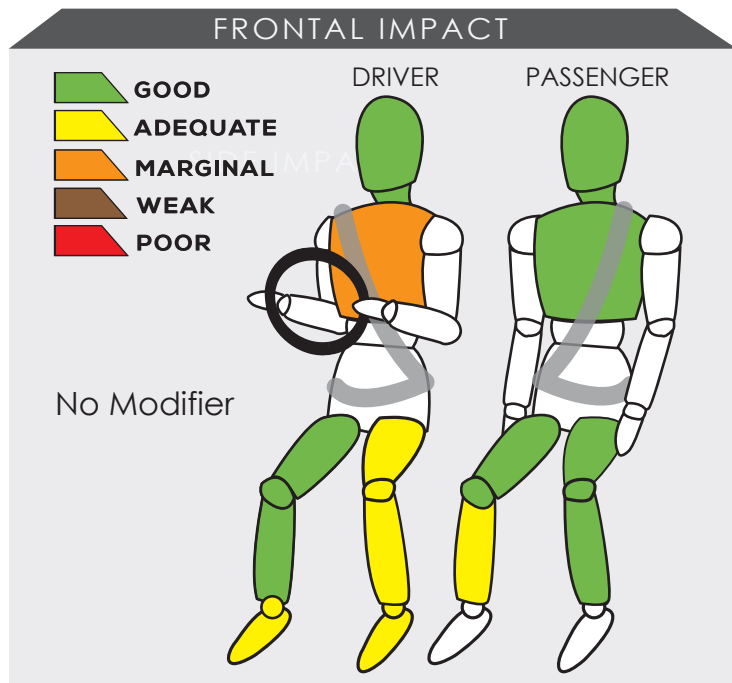


# PROTON SAGA (2025)



Variant <b>STANDARD</b>	Year Built <b>2025</b>
Model Year <b>2025</b>	Vehicle Category <b>SEDAN</b>
Engine Capacity <b>1.5L</b>	Kerb Mass <b>1050 kg</b>
No. of Airbags <b>2</b>	Test Lab <b>PC3</b>

TESTED VARIANT ORIGIN	<b>MALAYSIA</b>	FOR	<b>MALAYSIA</b>
OTHER ASEAN PRODUCTION (ALL VARIANTS)	-	FOR	-

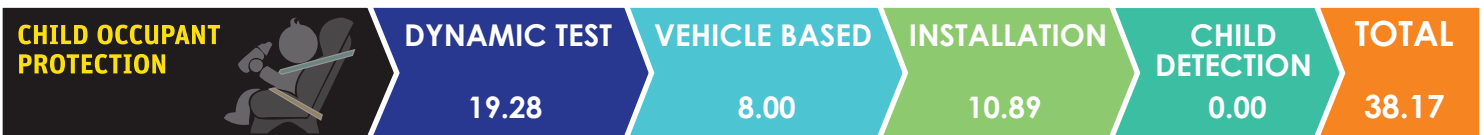


The sedan's frontal occupant compartment remained stable in the frontal offset test. Data obtained from the test dummy showed there was marginal protection to the driver's chest. The driver's feet and ankles received adequate protection in the test.

The driver's chest received marginal protection in the side impact test.

# SAFETY ITEMS (PASSIVE)

ITEMS		REGION	ASEAN
Airbags	Driver		Standard on all variants
	Passenger		Standard on all variants
	Side (2)		Available as optional
	Curtain (2)		Available as optional
	Knee		Not Available
Seatbelts	Retractor Pre-tensioner & Load Limiter for Driver		Standard on all variants
	Retractor Pre-tensioner & Load Limiter for Passenger		Standard on all variants



### DYNAMIC TEST ASSESSMENT

**18-MONTH-OLD CHILD**

**Restraint** : Britax Romer Baby-Safe<sup>2</sup> i-Size BR  
**Facing** : Rearward Facing  
**Installation** : ISOFIX & Supportleg

**3-YEAR-OLD CHILD**

**Restraint** : Joie i Spin 360  
**Facing** : Forward Facing  
**Installation** : ISOFIX & Supportleg

Frontal Impact	: 8.000	Frontal Impact	: 3.283
Side Impact	: 4.000	Side Impact	: 4.000
Total Performance	: 12.000	Total Performance	: 7.283

## CRS INSTALLATION ASSESSMENT

CRS	DIRECTION	SEAT POSITION						
		FRONT PASSENGER	2ND ROW			3RD ROW		
			LEFT	CENTRE	RIGHT	LEFT	CENTRE	RIGHT
Peg-Perego Primo Viaggio SL	Rwd	EXEMPT	PASS	PASS	PASS	N/A	N/A	N/A
Joie Stages	Rwd	EXEMPT	PASS	PASS	PASS	N/A	N/A	N/A
Joie Stages	Fwd	PASS	FAIL	FAIL	PASS	N/A	N/A	N/A
Combi Buon Junior Air	Fwd	PASS	PASS	FAIL	PASS	N/A	N/A	N/A
Maxi Cosi Cabriofix + Family Fix	Rwd	EXEMPT	PASS	EXEMPT	PASS	N/A	N/A	N/A
Joie Every Stage Fx	Fwd	EXEMPT	PASS	EXEMPT	PASS	N/A	N/A	N/A
Joie Every Stage Fx	Rwd	EXEMPT	PASS	PASS	PASS	N/A	N/A	N/A
Maxi Cosi Titan Pro	Fwd	EXEMPT	PASS	EXEMPT	PASS	N/A	N/A	N/A
Britax KidFix 2 R	Fwd	PASS	PASS	FAIL	PASS	N/A	N/A	N/A
Britax Romer Baby-Safe <sup>2</sup> i-Size BR*	Rwd	EXEMPT	PASS	EXEMPT	PASS	N/A	N/A	N/A
Joie i Spin 360*	Fwd	EXEMPT	PASS	EXEMPT	PASS	N/A	N/A	N/A

PASS : Install without problem, FAIL : Safety critical problem, EXEMPT : Installation not allowed, N/A : Not available  
 \*Manufacturer's selection

<b>SAFETY ASSIST</b>		<b>EFFECTIVE BRAKING &amp; AVOIDANCE</b> 6.00	<b>SEATBELT REMINDERS</b> 3.00	<b>AUTONOMOUS EMERGENCY BRAKING</b> 3.00	<b>ADVANCED SATs</b> 2.00	<b>TOTAL</b> 14.00
----------------------	--	--	-----------------------------------	---	------------------------------	-----------------------

<b>ITEMS</b>	<b>ASEAN</b>
--------------	--------------

<b>Effective Braking &amp; Avoidance</b>
--

Anti-lock Braking System	Standard on all variants
Electronic Stability Control	Standard on all variants

<b>Seatbelt Reminders</b>
---------------------------

Driver	Standard on all variants
Front Passenger	Standard on all variants
Rear Passengers	Not available
Rear Seat Occupant Detection	Not available

<b>Autonomous Emergency Braking</b>
-------------------------------------

City	Available as optional
Inter-Urban	Available as optional
Pedestrian	Not available

<b>Advanced Safety Assist Technologies</b>
--

Lane Departure Warning System	Available as optional
Forward Collision Warning System	Available as optional
Lane Keep Assist	Not available

<b>AUTONOMOUS EMERGENCY BRAKING ASSESSMENT</b>
--

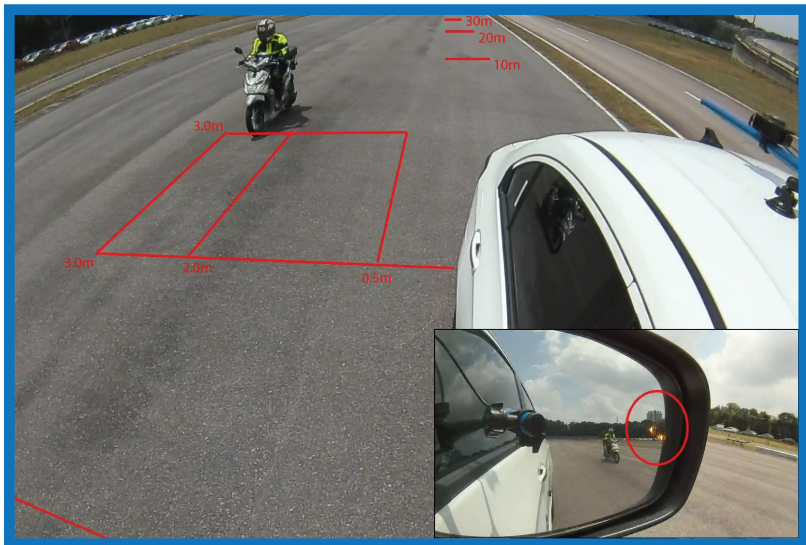


ASEAN NCAP introduces the Autonomous Emergency Braking (AEB) system functionality assessment in its current 2021-2025 protocol. In the protocol, ASEAN NCAP assessed the functionality and effectiveness of AEB City (car-to-car rear stationary) and AEB Inter-Urban (car-to-car rear moving) systems fitted inside the vehicle in performing emergency braking at several speeds against another preceding vehicle. The Proton Saga is equipped with both the AEB City and Inter-Urban systems as optional across all its variants. In this assessment, ASEAN NCAP confirms the technologies have functioned according to the ASEAN NCAP requirements.



ITEMS	ASEAN
<b>Blind Spot Detection</b>	
Nearside	Available as optional
Offside	Available as optional
<b>Rear Visualization</b>	
Advanced Rear Visualization	Not available
<b>Headlight</b>	
Auto High Beam	Available as optional
<b>Pedestrian</b>	
Pedestrian Protection	Not available
<b>Advanced Motorcyclist Safety Technology</b>	
AEB for Motorcycle	Available as optional

## BLIND SPOT DETECTION ASSESSMENT




Starting from the 2017-2020 protocol, ASEAN NCAP introduced an assessment on the functionality of Blind Spot Technology fitted inside the assessed vehicle. ASEAN NCAP continues the assessment under the new Motorcyclist Safety pillar for the current 2021-2025 protocol. The new Proton Saga is equipped with Blind Spot Detection (BSD) on both sides of the vehicle as optional fitment. In the assessment, ASEAN NCAP confirms the technology has functioned according to the ASEAN NCAP requirements on both sides of the vehicle.



## OVERALL RATING

The newly released Proton Saga is the latest lineup of Proton models that underwent ASEAN NCAP assessment. The Proton Saga was previously assessed by ASEAN NCAP in 2016 under the earlier (2012–2016) protocol, where it achieved a 4-Star rating for Adult Occupant Protection (AOP) and a 71% compliance score in Child Occupant Protection (COP). For this year's model, the new Saga offers a standard fitment of 2 airbags, Electronic Stability Control (ESC), Anti-lock Braking System (ABS), Seatbelt Reminder System (SBR) for both frontal passengers, and ISOFIX for child seat as standard features across all its variants. Technologies consisting of Autonomous Emergency Braking (AEB) City, AEB Inter-Urban, Lane Departure Warning (LDW), Forward Collision Warning (FCW), Blind Spot Detection (BSD) for both offside and nearside of the vehicle, and Auto High Beam (AHB) are available as optional fitment. The model also obtained the bonus point that is given for having an Advanced Motorcyclist Safety Technology by offering the AEB for Motorcycle as optional equipment. The new Proton Saga performed well under the current 2021-2025 ASEAN NCAP assessment protocol by obtaining an overall score of 66.70 points. These achieved scores have made the new Saga eligible to be awarded with 4-Star ASEAN NCAP rating.

	AOP			COP			SAFETY ASSIST			MS			2021 - 2025 ASEAN NCAP RATING
	Item	Point	Max	Item	Point	Max	Item	Point	Max	Item	Point	Max	
	ODB	12.98	16.00	FRONTAL	11.28	16.00	EBA	6.00	6.00	BSD/BSV	4.00	8.00	<div style="background-color: yellow; text-align: center; font-size: 48px; font-weight: bold; padding: 20px;">4</div>
	SIDE	6.74	8.00	SIDE	8.00	8.00	SBR	3.00	6.00	ARV	-	4.00	
	HPT Evaluation	4.00	8.00	Installation	10.89	12.00	AEB City	1.25	2.50	AHB	1.00	2.00	
				Vehicle Based CPD	8.00	13.00	AEB Inter-Urban	1.75	3.50	Ped. Protection	-	2.00	
					-	2.00	Advanced SATs	2.00	3.00	Advanced MST*	2.00	2.00	
<b>Score</b>		23.72	32.00		38.17	51.00		14.00	21.00		7.00	16.00	
<b>Normalized Score</b>		0.74			0.75			0.67			0.4375		
<b>Weighting</b>		40%			20%			20%			20%		
<b>Weighted Score</b>		29.65			14.97			13.33			8.75		
<b>Maximum Star Rating</b>		4			4			4			4		
												<b>OVERALL SCORE</b>	
												66.70	
												4	

\*Bonus Point