

# MG MGS5 EV



**Variant**  
49 COM

**Year Built**  
2025

**Model Year**  
2025

**Vehicle Category**  
SUV

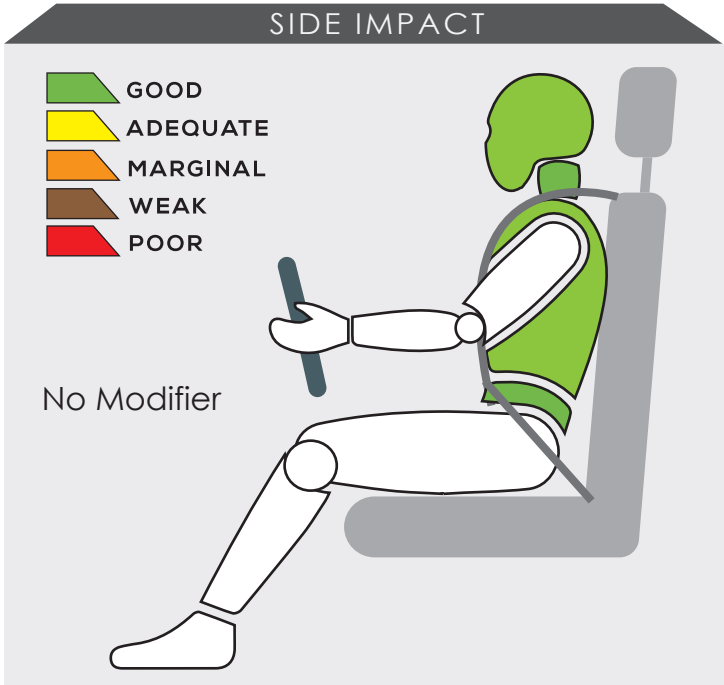
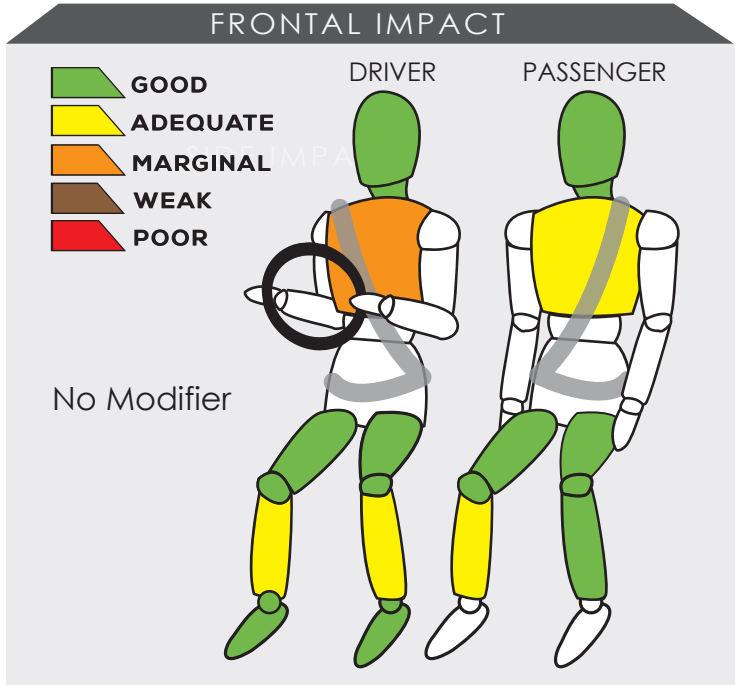
**Engine Capacity**  
125kW

**Kerb Mass**  
1635 kg

**No. of Airbags**  
6

**Test Lab**  
CAERI

TESTED VARIANT ORIGIN	THAILAND	FOR	THAILAND
OTHER ASEAN PRODUCTION (ALL VARIANTS)	CHINA	FOR	MALAYSIA, SINGAPORE




The SUV's frontal occupant compartment remained stable in the frontal offset test. Data obtained from the test dummy showed there was marginal protection to the driver's chest. In addition, both of the driver's lower legs and the passenger's right lower leg received adequate protection in the test.

The performance of HPT was confirmed with additional deployment test and its score was determined by Fitment Rating System (FRS).

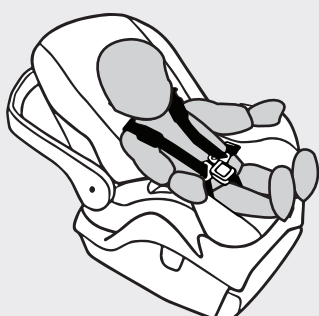

## SAFETY ITEMS (PASSIVE)

ITEMS		REGION	ASEAN
Airbags	Driver		Standard on all variants
	Passenger		Standard on all variants
	Side (2)		Standard on all variants
	Curtain (2)		Standard on all variants
	Knee		Not Available
	Center		Available as standard or optional
Seatbelts	Retractor Pre-tensioner & Load Limiter for Driver		Standard on all variants
	Retractor Pre-tensioner & Load Limiter for Passenger		Standard on all variants

CHILD OCCUPANT PROTECTION	DYNAMIC TEST	VEHICLE BASED	INSTALLATION	CHILD DETECTION	TOTAL
	23.91	9.00	10.43	0.00	43.33

## DYNAMIC TEST ASSESSMENT



18-MONTH-OLD CHILD		3-YEAR-OLD CHILD	
Restraint	: Joie i Spin 360	Restraint	: Joie i Spin 360
Facing	: Rearward Facing	Facing	: Rearward Facing
Installation	: ISOFIX & Supportleg	Installation	: ISOFIX & Supportleg
			
Frontal Impact	: 8.000	Frontal Impact	: 7.909
Side Impact	: 4.000	Side Impact	: 4.000
Total Performance	: 12.000	Total Performance	: 11.909

## CRS INSTALLATION ASSESSMENT

CRS	DIRECTION	SEAT POSITION						
		FRONT	2ND ROW			3RD ROW		
		PASSENGER	LEFT	CENTRE	RIGHT	LEFT	CENTRE	RIGHT
Peg-Perego Primo Viaggio SL	Rwd	EXEMPT	PASS	PASS	PASS	N/A	N/A	N/A
Joie Stages	Rwd	EXEMPT	PASS	FAIL	PASS	N/A	N/A	N/A
Joie Stages	Fwd	PASS	PASS	PASS	PASS	N/A	N/A	N/A
Combi Buon Junior Air	Fwd	PASS	PASS	FAIL	FAIL	N/A	N/A	N/A
Maxi Cosi Cabriofix + Family Fix	Rwd	EXEMPT	PASS	EXEMPT	PASS	N/A	N/A	N/A
Joie Every Stage Fx	Fwd	EXEMPT	PASS	EXEMPT	PASS	N/A	N/A	N/A
Joie Every Stage Fx	Rwd	EXEMPT	PASS	FAIL	PASS	N/A	N/A	N/A
Maxi Cosi Titan Pro	Fwd	EXEMPT	PASS	EXEMPT	PASS	N/A	N/A	N/A
Britax KidFix 2 R	Fwd	PASS	PASS	FAIL	PASS	N/A	N/A	N/A
Joie i Spin 360 *	Rwd	EXEMPT	PASS	EXEMPT	PASS	N/A	N/A	N/A
Joie i Spin 360 *	Rwd	EXEMPT	PASS	EXEMPT	PASS	N/A	N/A	N/A

PASS : Install without problem, FAIL : Safety critical problem, EXEMPT : Installation not allowed, N/A : Not available

\*Manufacturer's selection

<b>SAFETY ASSIST</b>		<b>EFFECTIVE BRAKING &amp; AVOIDANCE</b> 6.00	<b>SEATBELT REMINDERS</b> 6.00	<b>AUTONOMOUS EMERGENCY BRAKING</b> 6.00	<b>ADVANCED SATs</b> 3.00	<b>TOTAL</b> 21.00
----------------------	--	--	-----------------------------------	---	------------------------------	-----------------------

<b>ITEMS</b>	<b>ASEAN</b>
--------------	--------------

<b>Effective Braking &amp; Avoidance</b>
--

Anti-lock Braking System	Standard on all variants
Electronic Stability Control	Standard on all variants

<b>Seatbelt Reminders</b>
---------------------------

Driver	Standard on all variants
Front Passenger	Standard on all variants
Rear Passengers	Standard on all variants
Rear Seat Occupant Detection	Standard on all variants

<b>Autonomous Emergency Braking</b>
-------------------------------------

City	Standard on all variants
Inter-Urban	Standard on all variants
Pedestrian	Standard on all variants

<b>Advanced Safety Assist Technologies</b>
--

Lane Departure Warning System	Standard on all variants
Forward Collision Warning System	Standard on all variants
Lane Keep Assist	Standard on all variants

<b>AUTONOMOUS EMERGENCY BRAKING ASSESSMENT</b>
--



ASEAN NCAP introduces the Autonomous Emergency Braking (AEB) system functionality assessment in its new 2021-2025 protocol. In the protocol, ASEAN NCAP assessed the functionality and effectiveness of AEB City and AEB Inter-Urban systems fitted inside the vehicle in performing emergency braking at several speeds against another preceding vehicle. The MG MGS5 EV is equipped with both the AEB City and Inter-Urban systems as standard across all its variants. In this assessment, ASEAN NCAP confirms the technologies have functioned according to the ASEAN NCAP requirements.

MOTORCYCLIST SAFETY	BLIND SPOT DETECTION	REAR VISUALIZATION	HEADLIGHT	PEDESTRIAN	ADVANCED MST	TOTAL
	8.00	0.00	2.00	2.00	2.00	14.00

ITEMS		ASEAN
Blind Spot Detection		
	Nearside	Standard on all variants
	Offside	Standard on all variants
Rear Visualization		
	Advanced Rear Visualization	Not available
Headlight		
	Auto High Beam	Standard on all variants
Pedestrian		
	Pedestrian Protection	Standard on all variants
Advanced Motorcyclist Safety Technology		
	AEB for Motorcycle	Standard on all variants

### BLIND SPOT DETECTION ASSESSMENT


Starting from the 2017-2020 protocol, ASEAN NCAP introduced an assessment on the functionality of Blind Spot Technology fitted inside the assessed vehicle. ASEAN NCAP continues the assessment under the new Motorcyclist Safety pillar for the current 2021-2025 protocol. The new MG MGS5 EV is equipped with Blind Spot Detection (BSD) on both sides of the vehicle as standard fitment. In the assessment, ASEAN NCAP confirms the technology has functioned according to the ASEAN NCAP requirements on both sides of the vehicle.





## OVERALL RATING

The newly released MG MGS5 EV is the latest lineup under the MG brand that underwent ASEAN NCAP assessment. The SUV is equipped with 6 airbags, Electronic Stability Control (ESC), Anti-lock Braking System (ABS), Seatbelt Reminder System (SBR) for both frontal, rear passengers and rear seat occupant detection, Autonomous Emergency Braking (AEB) City, AEB Inter-Urban, AEB Pedestrian, Lane Departure Warning (LDW), Forward Collision Warning (FCW) and Lane Keep Assist (LKA), Blind Spot Detection (BSD) on both sides of the vehicle, Auto High Beam (AHB), Pedestrian Protection (PP), ISOFIX for child seat and AEB for Motorcycle as standard features across all its variants. Regardless, the model offers a Center Airbag as standard for its Malaysia and Singapore markets. MG MGS5 EV achieved an impressive score of 92.39 points accumulated from all the four assessed categories. The overall score has made the model to be awarded with 5-Star ASEAN NCAP rating.

	AOP			COP			SAFETY ASSIST			MS			2021 - 2025 ASEAN NCAP RATING
	Item	Point	Max	Item	Point	Max	Item	Point	Max	Item	Point	Max	
	ODB	14.32	16.00	FRONTAL	15.91	16.00	EBA	6.00	6.00	BSD/BSV	8.00	8.00	<div>5</div>
	SIDE	8.00	8.00	SIDE	8.00	8.00	SBR	6.00	6.00	ARV	-	4.00	
	HPT Evaluation	8.00	8.00	Installation	10.43	12.00	AEB City	2.50	2.50	AHB	2.00	2.00	
				Vehicle Based CPD	9.00	13.00	AEB Inter-Urban	3.50	3.50	Ped. Protection	2.00	2.00	
					-	2.00	Advanced SATs	3.00	3.00	Advanced MST*	2.00	2.00	
Score		30.32	32.00		43.33	51.00		21.00	21.00		14.00	16.00	OVERALL SCORE
Normalized Score		0.95			0.85			1.00			0.875		
Weighting		40%			20%			20%			20%		
Weighted Score		37.90			16.99			20.00			17.50		
Maximum Star Rating		5			5			5			5		5

\*Bonus Point