

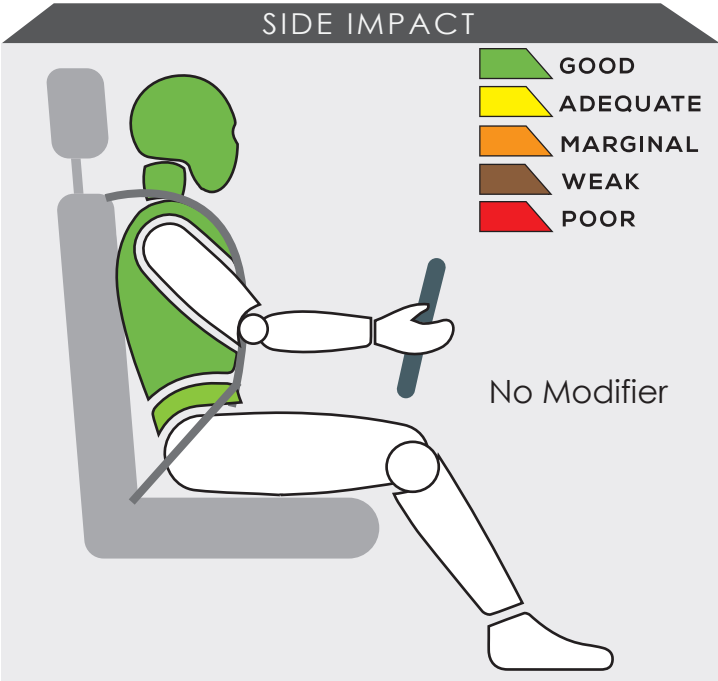
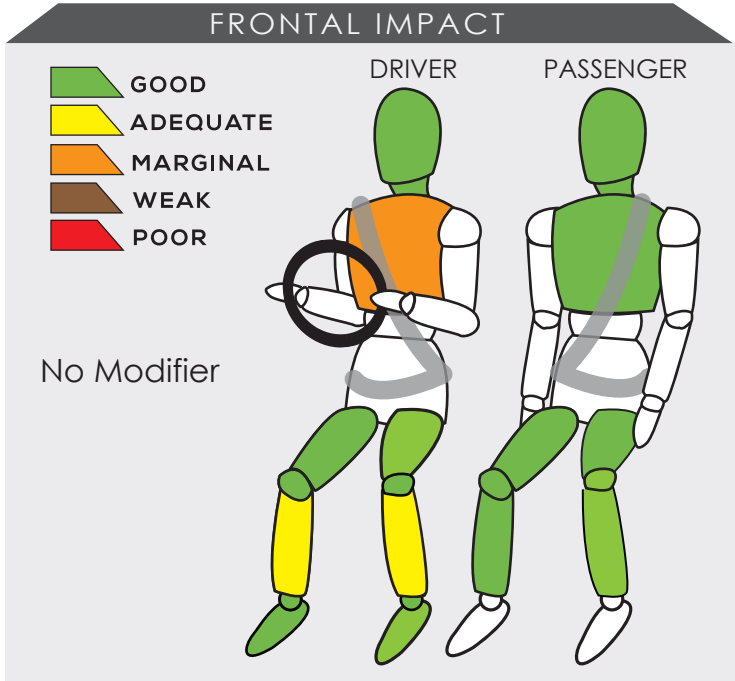
# GAC EMKOO



Variant <b>GAC6470ECW6C</b>	Year Built <b>2025</b>
Model Year <b>2025</b>	Vehicle Category <b>SUV</b>
ENGINE Capacity <b>1.5 L</b>	Kerb Mass <b>1540 kg</b>
No. of Airbags <b>6</b>	Test Lab <b>CAERI</b>

TESTED VARIANT ORIGIN	CHINA	FOR	MALAYSIA
OTHER ASEAN PRODUCTION (ALL VARIANTS)	MALAYSIA	FOR	MALAYSIA

<b>ADULT OCCUPANT PROTECTION</b> 	<b>FRONTAL IMPACT</b>	<b>SIDE IMPACT</b>	<b>HEAD PROTECTION TECHNOLOGY</b>	<b>TOTAL</b>
	14.30	8.00	8.00	30.30




The SUV's frontal occupant compartment remained stable in the frontal offset test. Data obtained from the test dummy showed there was marginal protection to the driver's chest. In addition, both of the driver's lower legs received adequate protection in the test.

The performance of HPT was confirmed with additional deployment test and its score was determined by Fitment Rating System (FRS).

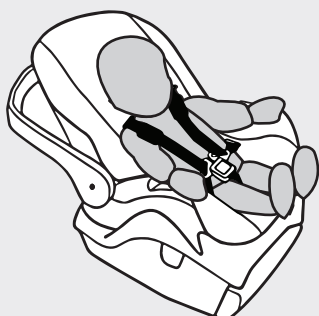

## SAFETY ITEMS (PASSIVE)

ITEMS		REGION	ASEAN
Airbags	Driver		Standard on all variants
	Passenger		Standard on all variants
	Side (2)		Standard on all variants
	Curtain (2)		Standard on all variants
	Knee		Not available
Seatbelts	Retractor Pre-tensioner & Load Limiter for Driver		Standard on all variants
	Retractor Pre-tensioner & Load Limiter for Passenger		Standard on all variants

CHILD OCCUPANT PROTECTION	DYNAMIC TEST	VEHICLE BASED	INSTALLATION	CHILD DETECTION	TOTAL
	24.00	8.00	8.83	0.00	40.83

### DYNAMIC TEST ASSESSMENT



18-MONTH-OLD CHILD		3-YEAR-OLD CHILD	
Restraint	: Joiei Every Stage Fx	Restraint	: Joiei Every Stage Fx
Facing	: Rearward Facing	Facing	: Rearward Facing
Installation	: Adult Seatbelt	Installation	: Adult Seatbelt
			
Frontal Impact	: 8.00	Frontal Impact	: 8.00
Side Impact	: 4.00	Side Impact	: 4.00
Total Performance	: 12.00	Total Performance	: 12.00

### CRS INSTALLATION ASSESSMENT

CRS	DIRECTION	SEAT POSITION						
		FRONT	2ND ROW			3RD ROW		
		PASSENGER	LEFT	CENTRE	RIGHT	LEFT	CENTRE	RIGHT
Peg-Perego Primo Viaggio SL	Rwd	EXEMPT	PASS	FAIL	PASS	N/A	N/A	N/A
Joie Stages	Rwd	EXEMPT	PASS	FAIL	PASS	N/A	N/A	N/A
Joie Stages	Fwd	PASS	FAIL	FAIL	PASS	N/A	N/A	N/A
Combi Buon Junior Air	Fwd	PASS	PASS	FAIL	PASS	N/A	N/A	N/A
Maxi Cosi Cabriofix + Family Fix	Rwd	EXEMPT	PASS	EXEMPT	PASS	N/A	N/A	N/A
Joie Every Stage Fx	Fwd	EXEMPT	PASS	EXEMPT	PASS	N/A	N/A	N/A
Joie Every Stage Fx	Rwd	EXEMPT	PASS	FAIL	PASS	N/A	N/A	N/A
Maxi Cosi Titan Pro	Fwd	EXEMPT	PASS	EXEMPT	PASS	N/A	N/A	N/A
Britax KidFix 2 R	Fwd	PASS	FAIL	PASS	FAIL	N/A	N/A	N/A
Joie Every Stage Fx	Rwd	EXEMPT	PASS	FAIL	PASS	N/A	N/A	N/A
Joie Every Stage Fx	Rwd	EXEMPT	PASS	FAIL	PASS	N/A	N/A	N/A

PASS : Install without problem, FAIL : Safety critical problem, EXEMPT : Installation not allowed, N/A : Not available

\*Manufacturer's selection

<b>SAFETY ASSIST</b>		<b>EFFECTIVE BRAKING &amp; AVOIDANCE</b> 6.00	<b>SEATBELT REMINDERS</b> 4.50	<b>AUTONOMOUS EMERGENCY BRAKING</b> 6.00	<b>ADVANCED SATs</b> 3.00	<b>TOTAL</b> 19.50
----------------------	--	--	-----------------------------------	---	------------------------------	-----------------------

<b>ITEMS</b>	<b>ASEAN</b>
--------------	--------------

<b>Effective Braking &amp; Avoidance</b>
--

Anti-lock Braking System	Standard on all variants
Electronic Stability Control	Standard on all variants

<b>Seatbelt Reminders</b>
---------------------------

Driver	Standard on all variants
Front Passenger	Standard on all variants
Rear Passengers	Standard on all variants
Rear Seat Occupant Detection	Available as optional

<b>Autonomous Emergency Braking</b>
-------------------------------------

City	Standard on all variants
Inter-Urban	Standard on all variants
Pedestrian	Standard on all variants

<b>Advanced Safety Assist Technologies</b>
--

Lane Departure Warning System	Standard on all variants
Forward Collision Warning System	Standard on all variants
Lane Keep Assist	Standard on all variants

<b>AUTONOMOUS EMERGENCY BRAKING ASSESSMENT</b>
--

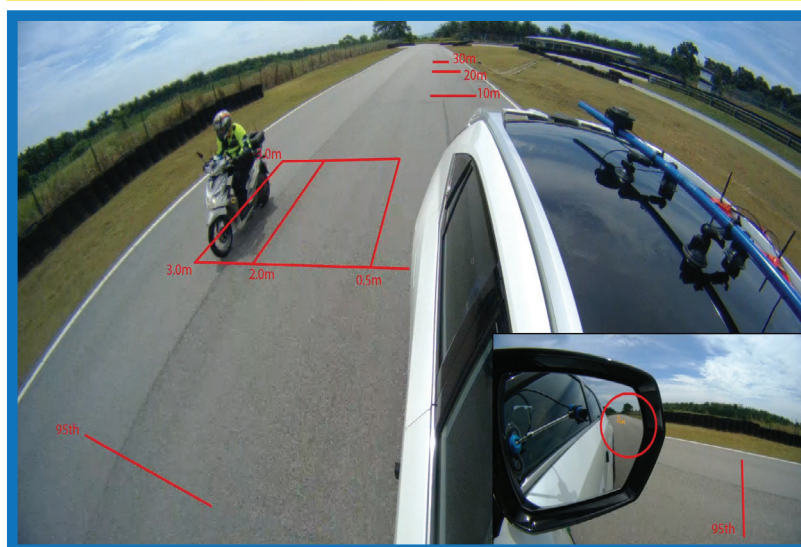


ASEAN NCAP introduces the Autonomous Emergency Braking (AEB) system functionality assessment under the current 2021-2025 protocol. In the protocol, ASEAN NCAP assessed the functionality and effectiveness of AEB City (car-to-car rear stationary) and AEB Inter-Urban (car-to-car rear moving) systems fitted inside the vehicle in performing emergency braking at several speeds against another preceeding vehicle. The new GAC EMKOO offers both the AEB City and Inter-Urban systems as standard across all its variants. In this assessment, ASEAN NCAP confirms the technologies have functioned according to the ASEAN NCAP requirements.

MOTORCYCLIST SAFETY	BLIND SPOT DETECTION	REAR VISUALIZATION	HEADLIGHT	PEDESTRIAN	ADVANCED MST	TOTAL
	4.00	0.00	2.00	2.00	2.00	10.00

ITEMS		ASEAN
Blind Spot Detection		
Nearside	Available as optional	
Offside	Available as optional	
Rear Visualization		
Advanced Rear Visualization	Not available	
Headlight		
Auto High Beam	Standard on all variants	
Pedestrian		
Pedestrian Protection	Standard on all variants	
Advanced Motorcyclist Safety Technology		
AEB for Motorcycle	Standard on all variants	

## BLIND SPOT DETECTION ASSESSMENT




Starting from the 2017-2020 protocol, ASEAN NCAP introduced an assessment on the functionality of Blind Spot Technology fitted inside the assessed vehicle. ASEAN NCAP continues the assessment under the new Motorcyclist Safety pillar for the current 2021-2025 protocol. The new GAC EMKOO is equipped with Blind Spot Detection (BSD) on both sides of the vehicle as an optional fitment. In the assessment, ASEAN NCAP confirms the technology has functioned according to the ASEAN NCAP requirements on both sides of the vehicle.





## OVERALL RATING

The new GAC EMKOO is the second model by GAC to be assessed by ASEAN NCAP. The model performed well in the assessment with offers of various vehicle safety technologies either as standard or optional fitment across its variants. The new GAC EMKOO is equipped with 6 airbags, Electronic Stability Control (ESC), Anti-lock Braking System (ABS), Seatbelt Reminder System (SBR) for both frontal and rear seat occupants, Autonomous Emergency Braking (AEB) City, AEB Inter-Urban, AEB Pedestrian, Lane Departure Warning (LDW), Forward Collision Warning (FCW), Lane Keep Assist (LKA), ISOFIX for child seats, Auto High Beam (AHB) and Pedestrian Protection (PP) technology as standard features on all variants. The EMKOO also offers AEB for Motorcycle as standard fitment in all its variants. Additionally, Rear Seat Occupant Detection under SBR assessment and Blind Spot Detection (BSD) technology is available on both sides of the vehicle as optional fitment. In the assessment the new GAC EMKOO achieved a maximum of 5-Star rating in all of the four assessed categories with a total score of 84.96 points. Based on the score, it has earned the SUV to be awarded with 5-Star ASEAN NCAP rating.

	AOP			COP			SAFETY ASSIST			MS			2021 - 2025 ASEAN NCAP RATING
	Item	Point	Max	Item	Point	Max	Item	Point	Max	Item	Point	Max	
	ODB	14.30	16.00	FRONTAL	16.00	16.00	EBA	6.00	6.00	BSD/BSV	4.00	8.00	<div>5</div>
	SIDE	8.00	8.00	SIDE	8.00	8.00	SBR	4.50	6.00	ARV	-	4.00	
	HPT Evaluation	8.00	8.00	Installation	8.83	12.00	AEB City	2.50	2.50	AHB	2.00	2.00	
				Vehicle Based	8.00	13.00	AEB Inter-Urban	3.50	3.50	Ped. Protection	2.00	2.00	
				CPD	-	2.00	Advanced SATs	3.00	3.00	Advanced MST*	2.00	2.00	
Score		30.30	32.00		40.83	51.00		19.50	21.00		10.00		OVERALL SCORE
Normalized Score		0.95			0.80			0.93			0.625		
Weighting		40%			20%			20%			20%		
Weighted Score		37.88			16.01			18.57			12.50		
Maximum Star Rating		5			5			5			5		5

\*Bonus Point