

HYUNDAI STARGAZER



Variant
ACTIVE

Year Built
2022

Model Year
2022

Vehicle Category
MPV

Engine Capacity
1.5 L

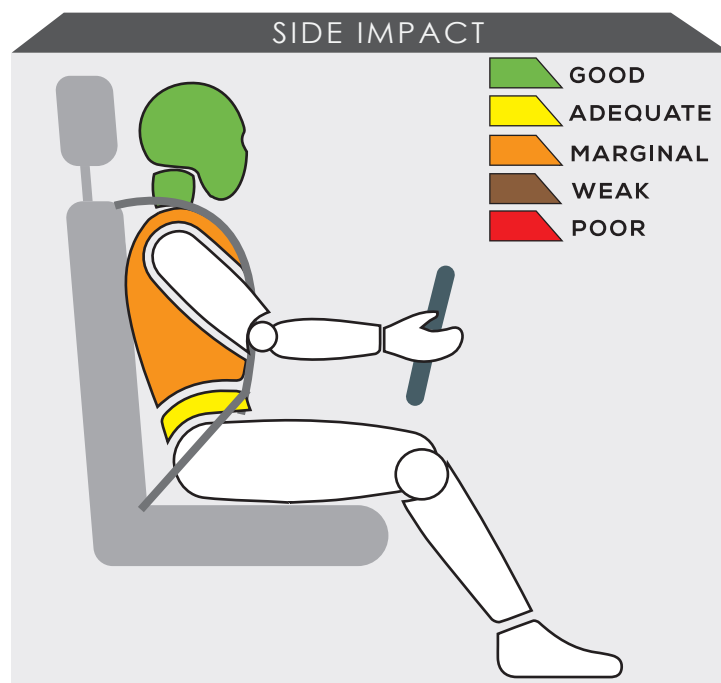
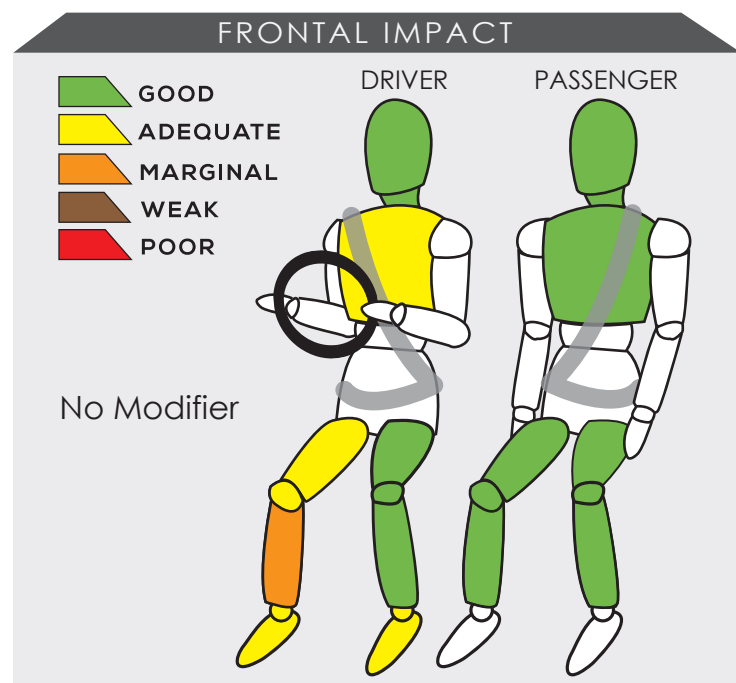
Kerb Mass
1135 kg

No. of Airbags
2

Test Lab
PC3

TESTED VARIANT ORIGIN	INDONESIA	FOR	BRUNEI, INDONESIA, CAMBODIA, LAOS, PHILIPPINES, THAILAND, VIETNAM
OTHER ASEAN PRODUCTION (ALL VARIANTS)	INDONESIA	FOR	BRUNEI, INDONESIA, CAMBODIA, LAOS, PHILIPPINES, THAILAND, VIETNAM

ADULT OCCUPANT PROTECTION	FRONTAL IMPACT	SIDE IMPACT	HEAD PROTECTION TECHNOLOGY	TOTAL
	13.79	7.18	4.00	24.97




Data obtained from the tested dummy showed there is high possibility for the driver to sustain injuries to the chest and its right leg in a real world crash. Nevertheless, the MPV's frontal occupant remained stable in the frontal offset test.

The driver received marginal protection to the chest during the side impact test.

SAFETY ITEMS (PASSIVE)

ITEMS		REGION	ASEAN
Airbags	Driver		Standard on all variants
	Passenger		Standard on all variants
	Side (2)		Available as optional
	Curtain (2)		Available as optional
	Knee		Not available
Seatbelts	Retractor Pre-tensioner & Load Limiter for Driver		Standard on all variants
	Retractor Pre-tensioner & Load Limiter for Passenger		Standard on all variants

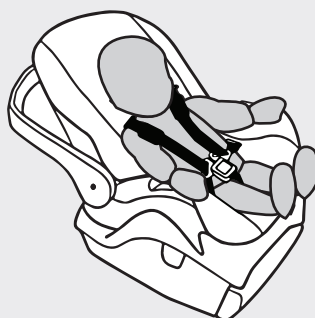
CHILD OCCUPANT PROTECTION	DYNAMIC TEST	VEHICLE BASED	INSTALLATION	CHILD DETECTION	TOTAL
	20.68	6.00	10.24	0.00	36.92

DYNAMIC TEST ASSESSMENT



18-MONTH-OLD CHILD

Restraint : Joie Every Stage Fx
Facing : Rearward Facing
Installation : Seatbelt



Frontal Impact : 7.59
 Side Impact : 4.00
 Total Performance : 11.59

3-YEAR-OLD CHILD

Restraint : Joie Every Stage Fx
Facing : Rearward Facing
Installation : Seatbelt



Frontal Impact : 5.08
 Side Impact : 4.00
 Total Performance : 9.08

CRS INSTALLATION ASSESSMENT

CRS	DIRECTION	SEAT POSITION						
		FRONT	2ND ROW			3RD ROW		
		PASSENGER	LEFT	CENTRE	RIGHT	LEFT	CENTRE	RIGHT
Peg-Perego Primo Viaggio SL	Rwd	EXEMPT	PASS	EXEMPT	PASS	PASS	N/A	PASS
Joie Stages	Rwd	EXEMPT	PASS	FAIL	PASS	PASS	N/A	PASS
Joie Stages	Fwd	PASS	PASS	FAIL	PASS	FAIL	N/A	FAIL
Combi Buon Junior Air	Fwd	PASS	PASS	FAIL	PASS	FAIL	N/A	FAIL
Maxi Cosi Cabriofix + Family Fix	Rwd	EXEMPT	PASS	EXEMPT	PASS	N/A	N/A	N/A
Joie Every Stage Fx	Fwd	EXEMPT	PASS	EXEMPT	PASS	N/A	N/A	N/A
Joie Every Stage Fx	Rwd	EXEMPT	PASS	FAIL	PASS	PASS	N/A	PASS
Maxi Cosi Titan Pro	Fwd	EXEMPT	PASS	EXEMPT	PASS	N/A	N/A	N/A
Britax KidFix 2 R	Fwd	PASS	PASS	EXEMPT	PASS	PASS	N/A	PASS
Joie Every Stage Fx*	Rwd	EXEMPT	PASS	EXEMPT	PASS	N/A	N/A	N/A
Joie Every Stage Fx*	Rwd	EXEMPT	PASS	FAIL	PASS	PASS	N/A	PASS

PASS : Install without problem, FAIL : Safety critical problem, EXEMPT : Installation not allowed, N/A : Not available

*Manufacturer's selection

SAFETY ASSIST		EFFECTIVE BRAKING & AVOIDANCE 3.64	SEATBELT REMINDERS 3.00	AUTONOMOUS EMERGENCY BRAKING 3.00	ADVANCED SATs 3.00	TOTAL 12.64
----------------------	--	--	-----------------------------------	---	------------------------------	-----------------------

ITEMS	ASEAN
--------------	--------------

Effective Braking & Avoidance
--

Anti-lock Braking System	Standard on all variants
Electronic Stability Control	Available as standard or optional

Seatbelt Reminders

Driver	Standard on all variants
Front Passenger	Standard on all variants
Rear Passengers	Not available
Rear Seat Occupant Detection	Not available

Autonomous Emergency Braking

City	Optional
Inter-Urban	Optional
Pedestrian	Optional

Advanced Safety Assist Technologies
--

Lane Departure Warning System	Available as standard or optional
Forward Collision Warning System	Available as standard or optional
Lane Keep Assist	Available as standard or optional

AUTONOMOUS EMERGENCY BRAKING ASSESSMENT
--

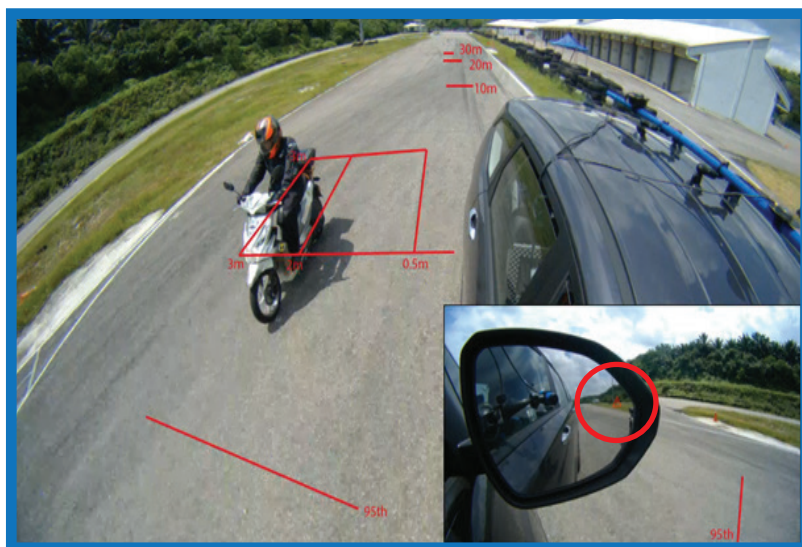


ASEAN NCAP is introducing the Autonomous Emergency Braking (AEB) system functionality assessment in its new 2021-2025 protocol. In the protocol, ASEAN NCAP assessed the functionality and effectiveness of AEB City and AEB Inter-Urban systems fitted inside the vehicle in performing emergency braking at several speeds against another preceeding vehicle. Both the AEB City and Inter-Urban systems are available in the Hyundai Stargazer as optional fitment accross all its variants. In this assessment, ASEAN NCAP confirms the technologies have functioned according to ASEAN NCAP requirements.

MOTORCYCLIST SAFETY	BLIND SPOT DETECTION	REAR VISUALIZATION	HEADLIGHT	PEDESTRIAN	ADVANCED MST	TOTAL
	4.00	0.00	1.00	2.00	0.00	7.00

ITEMS		ASEAN
Blind Spot Detection		
Nearside	Optional	
Offside	Optional	
Rear Visualization		
Advanced Rear Visualization	Not available	
Headlight		
Auto High Beam	Optional	
Pedestrian		
Pedestrian Protection	Standard on all variants	
Advanced Motorcyclist Safety Technology		
Nil	-	

BLIND SPOT DETECTION ASSESSMENT




Starting from the 2017-2020 protocol, ASEAN NCAP had introduced assessment on the functionality of Blind Spot Technology fitted inside the assessed vehicle. ASEAN NCAP continues the assessment under the new Motorcyclist Safety pillar for the new 2021-2025 protocol. The newly assessed Hyundai Stargazer is equipped with Blind Spot Detection (BSD) on the driver and passenger sides of the vehicle as optional fitment. In this assessment, ASEAN NCAP confirms the technology has functioned according to ASEAN NCAP requirements on both the left and right sides area of the vehicle.



OVERALL RATING

The Hyundai Stargazer is the second Hyundai model to be assessed under the ASEAN NCAP 2021-2025 assessment protocol. It is the first MPV under the Hyundai brand to undergo the assessment in which it is equipped with 2 airbags as standard across variants. The Stargazer has a standard fitment of Anti-lock Braking System (ABS), Seatbelt Reminder System (SBR) for both frontal occupants, ISOFIX installation for child seats and Pedestrian Protection technology. In addition, technologies like Electronic Stability Control (ESC), Lane Departure Warning (LDW), Forward Collision Warning (FCW) and Lane Keep Assist (LKA) are available as standard or optional equipment across variants with Thailand market offering ESC as standard fitment. The model also offers Autonomous Emergency Braking (AEB) City, AEB Inter-Urban, AEB Pedestrian, Blind Spot Detection (BSD) and Auto High Beam (AHB) as optional fitment in all its variants. The 7-seater MPV made a great performance in the assessment with an accumulated score of 66.48 points based on the AOP, COP, SA and MS categories. The score has placed Hyundai Stargazer to be eligible to be awarded with 4-Star ASEAN NCAP rating.

	AOP			COP			SAFETY ASSIST			MS			2021 - 2025 ASEAN NCAP RATING
	Item	Point	Max	Item	Point	Max	Item	Point	Max	Item	Point	Max	
	ODB	13.79	16.00	FRONTAL	12.68	16.00	EBA	3.64	6.00	BSD/BSV	4.00	8.00	4
	SIDE	7.18	8.00	SIDE	8.00	8.00	SBR	3.00	6.00	ARV	-	4.00	
	HPT Evaluation	4.00	8.00	Installation	10.24	12.00	AEB City	1.25	2.50	AHB	1.00	2.00	
				Vehicle Based CPD	6.00	13.00	AEB Inter-Urban	1.75	3.50	Ped. Protection	2.00	2.00	
					-	2.00	Advanced SATs	3.00	3.00	Advanced MST*	-	2.00	
Score		24.97	32.00		36.92	51.00		12.64	21.00		7.00	16.00	OVERALL SCORE
Normalized Score		0.78			0.72			0.60			0.4375		
Weighting		40%			20%			20%			20%		
Weighted Score		31.21			14.48			12.04			8.75		
Maximum Star Rating		4			4			4			4		

*Bonus Point