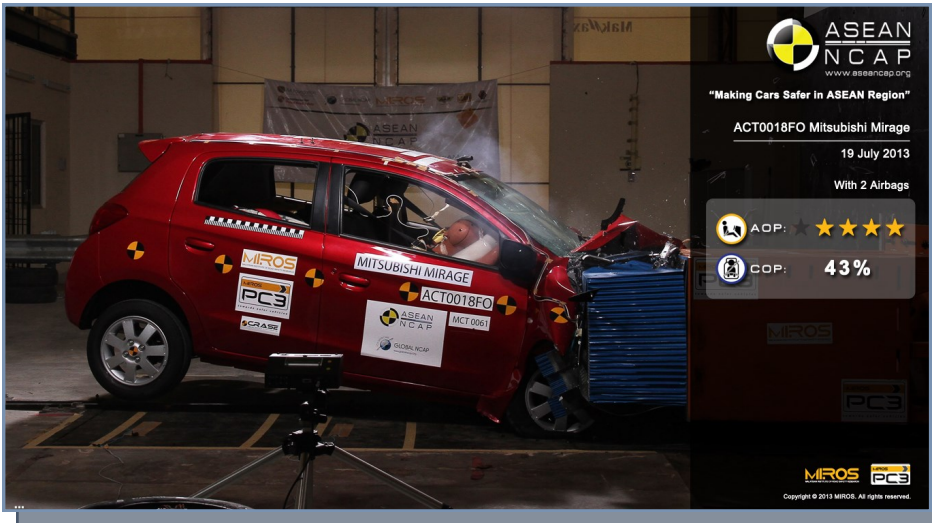


# MITSUBISHI MIRAGE

ASEAN NCAP PHASE II



VARIANT **GLS/GLS Ltd.**

YEAR BUILT **2013**

MODEL YEAR **2014MY**

VEHICLE CATEGORY **HATCHBACK**

ENGINE CAPACITY **1.2 L PETROL**

KERB MASS **865**

TEST LAB

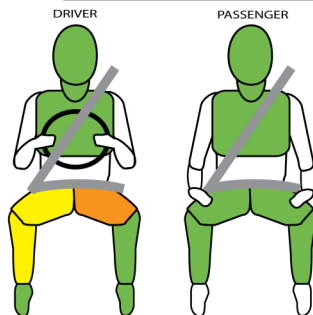


TESTED VARIANT ORIGIN	THAILAND	FOR	THAILAND
OTHER ASEAN PRODUCTION	THAILAND	FOR	THAILAND, MALAYSIA, PHILIPPINES, SINGAPORE, BRUNEI, INDONESIA

Mitsubishi Mirage is produced solely in Thailand for ASEAN market namely for Malaysia, Philippines, Singapore, Brunei and Indonesia, besides its own domestic market. The tested variant is only available for Thailand market. The variants being offered in the ASEAN market are primarily distinguished by the transmission type (manual or automatic), the fitment of seat belt reminder (SBR) and anti-lock braking system (ABS). All variants are fitted with double airbags except for the base model (low) that has only driver airbag for Indonesia and Thailand market. In view of child restraint system, the best specification for Mirage with ISOFIX and Top Tether is available for Malaysia and Brunei. The company is also looking forward for just offering two variants – low and high grade – for ASEAN market starting 2014. This particular hatch scored 13.07 in the Adult Occupant Protection (AOP) and 43% in the Child Occupant Protection (COP) ratings, which places it in the 4-star category. This rating is also applicable to its sedan version, known as Mitsubishi Attrage in Thailand market, but limited to the high grade (GLS/GLS Ltd.) which has similar safety items such as number of airbags and seatbelt pre-tensioner system.



AOP POINTS **13.07**



MODIFIER **Driver upper leg concentrated loading & variable contact for left knee; variable contact for right knee.**

SAFETY ITEMS		TESTED VARIANT	OTHER ASEAN VARIANT
AIRBAGS	DAB : PAB	S : S	S : V
SBR	Driver : Front Passenger	X : X	V : X
SEATBELT	Retractor Pre-tensioner & Load Limiter for Driver	S (with lap outer pre-tensioner)	S
	Retractor Pre-tensioner & Load Limiter for Front Passenger	S	V
3-POINT BELT	All Forward Facing Seats	S (V for 2nd Row Middle Seat)	S (V for 2nd Row Middle Seat)
ABS	Anti-lock Braking System	S	O
ESC	Stability Control	X	X

**Key:**

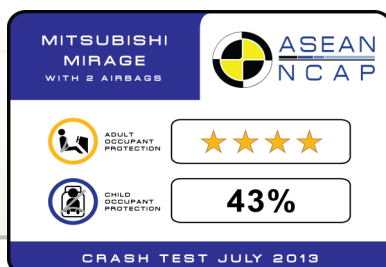
S : Standard on all variants

O : Optional on base; Standard on higher variants

V : Not available on base; Standard/Optional on higher variants

X : Not available

# ESC & SBR required for 5-Star rating from 2012



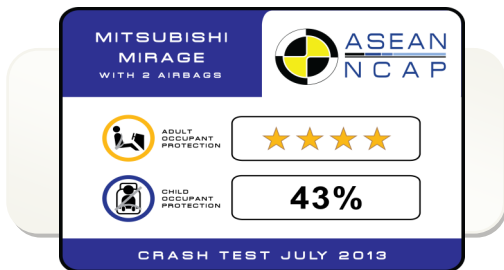
# MITSUBISHI MIRAGE

ASEAN NCAP PHASE II



CHILD OCCUPANT PROTECTION

COP Compliance **43 %**



CRS TYPE	<b>P3</b>	<b>P1.5</b>
ATTACHMENT	Seatbelt	Seatbelt
BRAND	Britax Duo Plus	Britax Baby Safe Plus SHR II

## CHILD OCCUPANT PROTECTION

Dynamic Test (max. 24)	CRS Based Assessment (max. 12)	Vehicle Based Assessment (max. 13)	TOTAL (max. 49)	Compliance (%)
5.98	12	3	20.98	43

