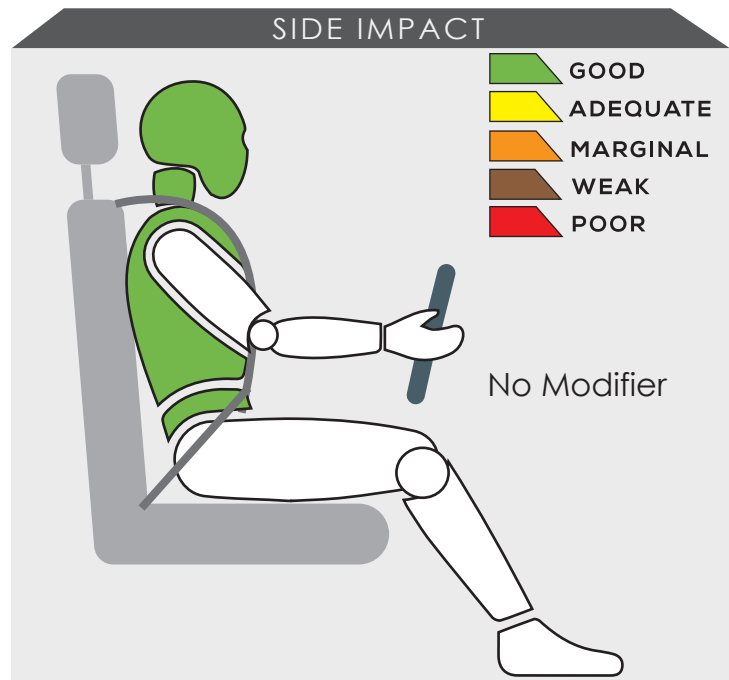
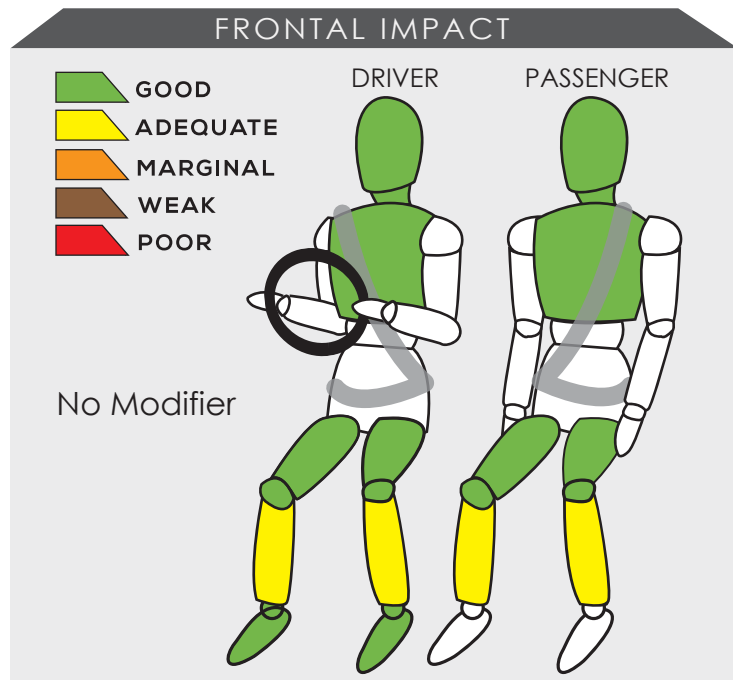


TOYOTA CAMRY



Variant 2.0G	Year Built 2018
Model Year 2018	Vehicle Category SEDAN
Engine Capacity 2.0 L	Kerb Mass 1520 kg
No. of Airbags 7	Test Lab JARI


TESTED VARIANT ORIGIN	THAILAND	FOR	THAILAND
OTHER ASEAN PRODUCTION (ALL VARIANTS)	THAILAND	FOR	THAILAND, BRUNEI, INDONESIA, LAOS, MALAYSIA, PHILIPPINES, SINGAPORE



The vehicle's passenger compartment remained stable in the frontal offset test. With the exception of the dummies' lower legs, the data showed the tested vehicle provided good protection to both the driver and front passenger.

The performance of HPT was confirmed with additional deployment test and its score was determined based on Fitment Rating System (FRS).

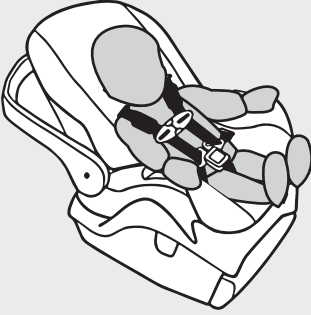

SAFETY ITEMS (PASSIVE)

ITEMS	COUNTRIES											
		TH	ID	KB	LA	MY	MM	PH	SG	TH	VN	
Airbags	Driver	S	S	NS	S	S	NS	S	S	S	NS	
	Passenger	S	S	NS	S	S	NS	S	S	S	NS	
	Side (2)	S	S	NS	S	S	NS	S	S	S	NS	
	Curtain (2)	S	S	NS	S	S	NS	S	S	S	NS	
	Knee (1)	S	S	NS	S	S	NS	S	S	S	NS	
Seatbelts	Retractor Pre-tensioner & Load Limiter for Driver	S	S	NS	S	S	NS	S	S	S	NS	
	Retractor Pre-tensioner & Load Limiter for Passenger	S	S	NS	S	S	NS	S	S	S	NS	

S : Standard on all variants, O : Optional on base; Standard on higher variants, X : Not available, TBA : To be advised, NS : Not sold



DYNAMIC TEST ASSESSMENT

18-MONTH-OLD CHILD		3-YEAR-OLD CHILD	
Restraint	: Joyson MIDI I-SIZE	Restraint	: Joyson MIDI I-SIZE
Facing	: Rearward Facing	Facing	: Rearward Facing
Installation	: ISOFIX & Supportleg	Installation	: ISOFIX & Supportleg
			
Frontal Impact	: 8.00	Frontal Impact	: 8.00
Side Impact	: 4.00	Side Impact	: 4.00
Total Performance	: 12.00	Total Performance	: 12.00

CRS INSTALLATION ASSESSMENT

CRS	DIRECTION	SEAT POSITION						
		FRONT	2ND ROW			3RD ROW		
		PASSENGER	LEFT	CENTRE	RIGHT	LEFT	CENTRE	RIGHT
Maxi Cosi Cabriofix	Rwd	EXEMPT	PASS	PASS	PASS	N/A	N/A	N/A
Combi Malgot	Rwd	EXEMPT	PASS	PASS	PASS	N/A	N/A	N/A
Combi Malgot	Fwd	PASS	PASS	FAIL	PASS	N/A	N/A	N/A
Combi Buon Junior Air	Fwd	PASS	PASS	FAIL	PASS	N/A	N/A	N/A
Britax Baby Safe Plus ISOFIX Base	Rwd	EXEMPT	PASS	EXEMPT	PASS	N/A	N/A	N/A
Maxi Cosi Milofix	Rwd	EXEMPT	PASS	EXEMPT	PASS	N/A	N/A	N/A
Maxi Cosi Milofix	Fwd	EXEMPT	PASS	EXEMPT	PASS	N/A	N/A	N/A
Britax Duo Plus	Fwd	EXEMPT	PASS	EXEMPT	PASS	N/A	N/A	N/A
Britax KidFix XP	Fwd	PASS	PASS	PASS	PASS	N/A	N/A	N/A
Joyson Safety Systems MIDI I-SIZE*	Rwd	EXEMPT	PASS	EXEMPT	PASS	N/A	N/A	N/A
Joyson Safety Systems MIDI I-SIZE*	Rwd	EXEMPT	PASS	EXEMPT	PASS	N/A	N/A	N/A

PASS : Install without problem, FAIL : Safety critical problem, EXEMPT : Installation not allowed, N/A : Not available
*Manufacturer's selection

BLIND SPOT TECHNOLOGY ASSESSMENT



ASEAN NCAP has introduced Blind Spot Technology (BST) in its new 2017-2020 protocol. In the protocol, ASEAN NCAP assessed the functionality of each BST introduced in the car. The Toyota Camry is equipped with BST as standard fitment in Brunei, Malaysia and Thailand market. However, the technology is not equipped in the models sold in the Singapore and the Philippines market but it is offered as an option in other markets. In this assessment, ASEAN NCAP confirms that the technology has functioned according to ASEAN NCAP requirements on both the left and right side area of the vehicle.

