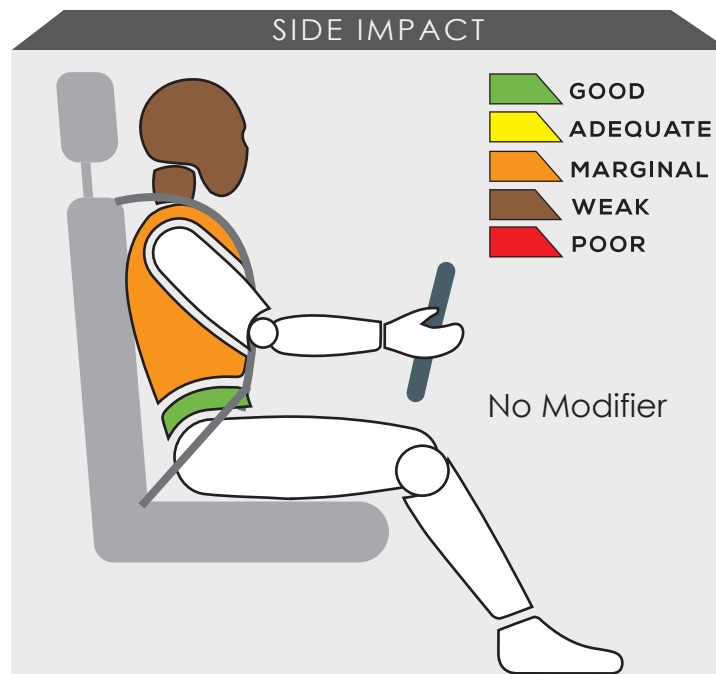
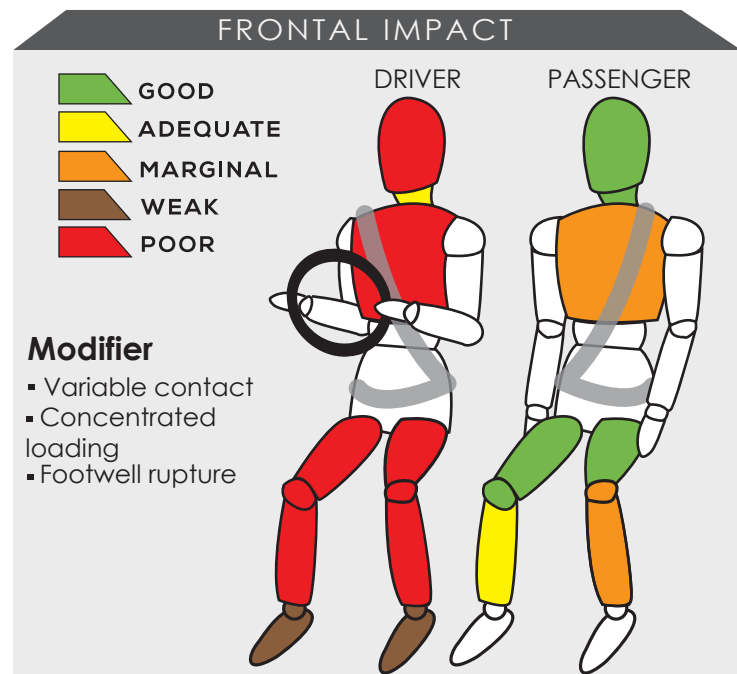


TATA SUPER ACE



Variant TATA Super Ace	Year Built 2018
Model Year 2018	Vehicle Category Small Truck
Engine Capacity 1.4 L	Kerb Mass 1260 kg
No. of Airbags 0	Test Lab PC3

TESTED VARIANT ORIGIN	INDIA	FOR	INDONESIA, MALAYSIA, THAILAND
OTHER ASEAN PRODUCTION (ALL VARIANTS)	-	FOR	-



In the frontal impact test, the driver sustained severe injury to the whole body. The front passenger only had marginal protection to its chest with possibility of serious injury to the lower legs in a real world crash.

Dummy readings in the side impact test showed weak protection to the driver's head. In addition, the chest too faced slightly similar result in this impact test.

SAFETY ITEMS (PASSIVE)

ITEMS		COUNTRIES										
Airbags	Driver	NS	X	NS	NS	X	NS	NS	NS	X	NS	
	Passenger	NS	X	NS	NS	X	NS	NS	NS	X	NS	
	Side	NS	X	NS	NS	X	NS	NS	NS	X	NS	
	Curtain	NS	X	NS	NS	X	NS	NS	NS	X	NS	
Seatbelts	Retractor Pre-tensioner & Load Limiter for Driver	NS	S	NS	NS	S	NS	NS	NS	S	NS	
	Retractor Pre-tensioner & Load Limiter for Passenger	NS	S	NS	NS	S	NS	NS	NS	S	NS	

S: Standard on all variants, O : Optional on base; Standard on higher variants, X : Not available, TBA : To be advised, NS : Not sold

CHILD OCCUPANT PROTECTION	DYNAMIC TEST	VEHICLE BASED	INSTALLATION	TOTAL
	-	-	-	-



DYNAMIC TEST ASSESSMENT			
18-MONTH-OLD CHILD		3-YEAR-OLD CHILD	
Restraint	: Honda Baby Safe ISOFIX	Restraint	: Honda ISOFIX
Facing	: Rearward Facing	Facing	: Forward Facing
Installation	: ISOFIX & Supportleg	Installation	: ISOFIX & Top Tether
Frontal Impact	: 0.00	Frontal Impact	: 0.00
Side Impact	: 0.00	Side Impact	: 0.00
Total Performance	: 0.00	Total Performance	: 0.00

CRS INSTALLATION ASSESSMENT

CRS	DIRECTION	SEAT POSITION						
		FRONT PASSENGER	2ND ROW			3RD ROW		
			LEFT	CENTRE	RIGHT	LEFT	CENTRE	RIGHT
Maxi Cosi Cabriofix	Rwd	N/A	N/A	N/A	N/A	N/A	N/A	N/A
Combi Malgot	Rwd	N/A	N/A	N/A	N/A	N/A	N/A	N/A
Combi Malgot	Fwd	N/A	N/A	N/A	N/A	N/A	N/A	N/A
Combi Buon Junior Air	Fwd	N/A	N/A	N/A	N/A	N/A	N/A	N/A
Britax Baby Safe Plus ISOFIX Base	Rwd	N/A	N/A	N/A	N/A	N/A	N/A	N/A
Maxi Cosi Milofix	Rwd	N/A	N/A	N/A	N/A	N/A	N/A	N/A
Maxi Cosi Milofix	Fwd	N/A	N/A	N/A	N/A	N/A	N/A	N/A
Britax Duo Plus	Fwd	N/A	N/A	N/A	N/A	N/A	N/A	N/A
Britax KidFix XP	Fwd	N/A	N/A	N/A	N/A	N/A	N/A	N/A
XXX (ISOFIX)	Rwd	N/A	N/A	N/A	N/A	N/A	N/A	N/A
XXX (ISOFIX)	Fwd	N/A	N/A	N/A	N/A	N/A	N/A	N/A

PASS : Install without problem, FAIL : Safety critical problem, EXEMPT : Installation not allowed, N/A : Not available



Effective Braking & Avoidance

ABS	NS	X	NS	NS	X	NS	NS	NS	X	NS
ESC	NS	X	NS	NS	X	NS	NS	NS	X	NS

Seatbelt Reminders

Driver	NS	X	NS	NS	X	NS	NS	NS	X	NS
Front Passengers	NS	X	NS	NS	X	NS	NS	NS	X	NS
Rear Passengers	NS	X	NS	NS	X	NS	NS	NS	X	NS

Blind Spot Technology

Nearside	NS	X	NS	NS	X	NS	NS	NS	X	NS
Offside	NS	X	NS	NS	X	NS	NS	NS	X	NS


Advanced Safety Assist Technologies

AEB City	NS	X	NS	NS	X	NS	NS	NS	X	NS
AEB Inter-Urban	NS	X	NS	NS	X	NS	NS	NS	X	NS
AEB VRU	NS	X	NS	NS	X	NS	NS	NS	X	NS
Lane Departure Warning System	NS	X	NS	NS	X	NS	NS	NS	X	NS
Forward Collision Warning System	NS	X	NS	NS	X	NS	NS	NS	X	NS
Lane Keep Assist	NS	X	NS	NS	X	NS	NS	NS	X	NS

O : Available, X : Not available, TBA : To be advised, NS : Not sold

OVERALL RATING

This is the second Tata model that underwent the ASEAN NCAP assessment. The first was conducted on Tata Vista in 2014 which obtained 3-Star for both the Adult Occupant Protection (AOP) and Child Occupant Protection (COP) categories. The tested Super Ace under the current assessment was not fitted with any airbag. There was no Electronic Stability Control, Anti-lock Braking System and Seatbelt Reminder System offered in the model. As the Tata Super Ace is a single cab vehicle, ASEAN NCAP did not perform the COP assessment. Hence, its overall score of 19.15 points was solely contributed by the points from the assessment under the AOP category. Based on this score, the Tata Super Ace achieved Zero Star ASEAN NCAP rating.

	AOP			COP			SAFETY ASSIST			2017 - 2020 ASEAN NCAP RATING 0
	Item	Point	Max	Item	Point	Max	Item	Point	Max	
	ODB	0.00	16.00	FRONTAL	0.00	8.00	EBA	0.00	8.00	<div style="border: 2px solid black; padding: 10px; font-size: 24pt; font-weight: bold;">0</div> OVERALL SCORE 19.15
	SIDE	10.34	16.00	SIDE	8.00	8.00	SBR	0.00	6.00	
	HPT Evaluation	0.00	4.00	Installation	12.00	12.00	BST	0.00	2.00	
				Vehicle Based	13.00	13.00	Advanced SATs	0.00	2.00	
Score		10.34	36.00			49.00		0.00	18.00	
Normalized Score		0.29						0.00		
Weighting		66.7%						33.3%		
Weighted Score		19.15						0.00		
Maximum Star Rating		1						0		

