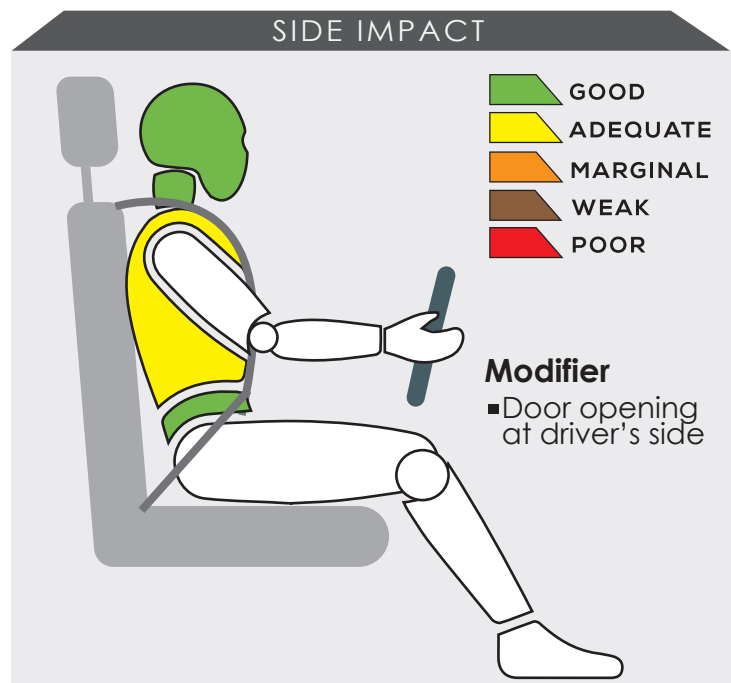
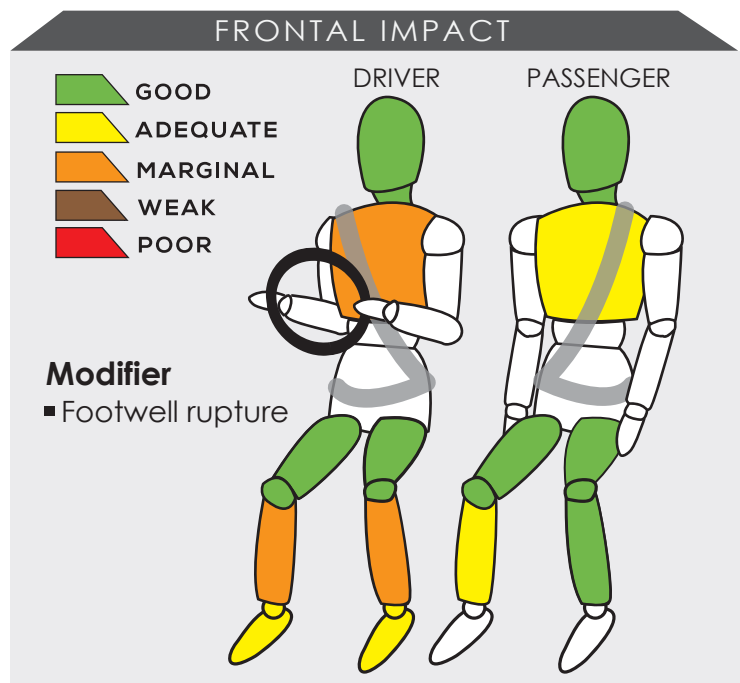


TOYOTA RUSH (2018)



Variant G	Year Built 2018
Model Year 2018	Vehicle Category SUV
Engine Capacity 1.5 L	Kerb Mass 1290 kg
No. of Airbags 6	Test Lab JARI

TESTED VARIANT ORIGIN	INDONESIA	FOR	INDONESIA
OTHER ASEAN PRODUCTION (ALL VARIANTS)	INDONESIA	FOR	INDONESIA, BRUNEI, PHILIPPINES, CAMBODIA



The driver's head and knee scored full four points in the test. However, in a real world crash, there is a possibility for the chest and lower leg to sustain injury. Dummy readings for the passenger showed adequate protection was given to the chest and lower left leg.

There was adequate protection to the driver's chest in the side impact test. In addition, the driver's side door was opened during the crash test.

SAFETY ITEMS (PASSIVE)

ITEMS		COUNTRIES										
Airbags	Driver	S	S	S	NS	NS	NS	S	NS	NS	NS	
	Passenger	S	S	S	NS	NS	NS	S	NS	NS	NS	
	Side (2)	S	S	S	NS	NS	NS	S	NS	NS	NS	
	Curtain (2)	S	S	S	NS	NS	NS	S	NS	NS	NS	
Seatbelts	Retractor Pre-tensioner & Load Limiter for Driver	S	S	S	NS	NS	NS	S	NS	NS	NS	
	Retractor Pre-tensioner & Load Limiter for Passenger	S	S	S	NS	NS	NS	S	NS	NS	NS	

S: Standard on all variants, O : Optional on base; Standard on higher variants, X : Not available, TBA : To be advised, NS : Not sold



DYNAMIC TEST ASSESSMENT

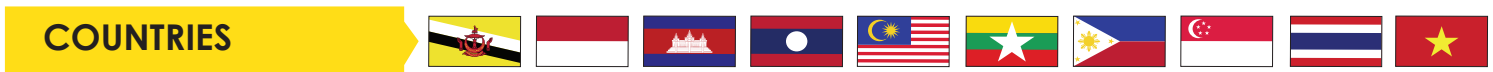


18-MONTH-OLD CHILD		3-YEAR-OLD CHILD	
Restraint	: Takata MINI	Restraint	: Takata MIDI I-SIZE
Facing	: Rearward Facing	Facing	: Rearward Facing
Installation	: ISOFIX & Supportleg	Installation	: ISOFIX & Supportleg
Frontal Impact	: 8.00	Frontal Impact	: 8.00
Side Impact	: 4.00	Side Impact	: 4.00
Total Performance	: 12.00	Total Performance	: 12.00

CRS INSTALLATION ASSESSMENT

CRS	DIRECTION	SEAT POSITION						
		FRONT	2ND ROW			3RD ROW		
		PASSENGER	LEFT	CENTRE	RIGHT	LEFT	CENTRE	RIGHT
Maxi Cosi Cabriofix	Rwd	EXEMPT	PASS	FAIL	PASS	FAIL	N/A	FAIL
Combi Malgot	Rwd	EXEMPT	PASS	FAIL	PASS	FAIL	N/A	FAIL
Combi Malgot	Fwd	PASS	PASS	FAIL	PASS	PASS	N/A	PASS
Combi Buon Junior Air	Fwd	PASS	PASS	FAIL	PASS	PASS	N/A	PASS
Britax Baby Safe Plus ISOFIX Base	Rwd	EXEMPT	PASS	EXEMPT	PASS	EXEMPT	N/A	EXEMPT
Maxi Cosi Milofix	Rwd	EXEMPT	PASS	EXEMPT	PASS	EXEMPT	N/A	EXEMPT
Maxi Cosi Milofix	Fwd	EXEMPT	PASS	EXEMPT	PASS	EXEMPT	N/A	EXEMPT
Britax Duo Plus	Fwd	EXEMPT	FAIL	EXEMPT	FAIL	EXEMPT	N/A	EXEMPT
Britax KidFix XP	Fwd	PASS	FAIL	FAIL	PASS	PASS	N/A	PASS
Takata MINI*	Rwd	EXEMPT	PASS	EXEMPT	PASS	EXEMPT	N/A	EXEMPT
Takata MIDI I-SIZE*	Rwd	EXEMPT	PASS	EXEMPT	PASS	EXEMPT	N/A	EXEMPT

PASS : Install without problem, FAIL : Safety critical problem, EXEMPT : Installation not allowed, N/A : Not available
*Manufacturer's selection



Effective Braking & Avoidance

ABS	O	O	O	NS	NS	NS	O	NS	NS	NS
ESC	O	O	O	NS	NS	NS	O	NS	NS	NS

Seatbelt Reminders

Driver	O	O	O	NS	NS	NS	O	NS	NS	NS
Front Passengers	O	O	O	NS	NS	NS	O	NS	NS	NS
Rear Passengers	O	O	O	NS	NS	NS	O	NS	NS	NS

Blind Spot Technology

Nearside	X	X	X	NS	NS	NS	X	NS	NS	NS
Offside	X	X	X	NS	NS	NS	X	NS	NS	NS

Advanced Safety Assist Technologies

AEB City	X	X	X	NS	NS	NS	X	NS	NS	NS
AEB Inter-Urban	X	X	X	NS	NS	NS	X	NS	NS	NS
AEB VRU	X	X	X	NS	NS	NS	X	NS	NS	NS
Lane Departure Warning System	X	X	X	NS	NS	NS	X	NS	NS	NS
Forward Collision Warning System	X	X	X	NS	NS	NS	X	NS	NS	NS
Lane Keep Assist	X	X	X	NS	NS	NS	X	NS	NS	NS

O : Available, X : Not available, TBA : To be advised, NS : Not sold

OVERALL RATING

This is the second time the Toyota Rush tested by ASEAN NCAP. The first was in 2015 in which the model received 4-Star rating for both Adult and Child Occupant Protection categories. Under the 2017-2020 rating system, the Toyota Rush has made significant improvement particularly in its crashworthiness structure by successfully obtaining 43.25 points for the AOP domain from the full score of 50 points. In the Safety Assist domain, the model is now equipped with six airbags, Electronic Stability Control and Seatbelt Reminder System (front and rear occupants) standard across all variants. Hence, the new Toyota Rush was awarded with an overall score of 84.03 points, which made it eligible for 5-Star ASEAN NCAP rating.

	AOP			COP			SAFETY ASSIST			2017 - 2020 ASEAN NCAP RATING
	Item	Point	Max	Item	Point	Max	Item	Point	Max	
	ODB	12.50	16.00	FRONTAL	16.00	16.00	EBA	8.00	8.00	<div style="background-color: green; color: white; text-align: center; font-size: 48px; font-weight: bold; padding: 20px;">5</div>
	SIDE	14.64	16.00	SIDE	8.00	8.00	SBR	6.00	6.00	
	HPT Evaluation	4.00	4.00	Installation	8.81	12.00	BST	-	2.00	
				Vehicle Based	9.00	13.00	Advanced SATs	-	2.00	
Score	31.14	36.00		41.81	49.00		14.00	18.00	OVERALL SCORE	
Normalized Score	0.87			0.85			0.78			84.03
Weighting	50%			25%			25%			5
Weighted Score	43.25			21.33			19.44			
Maximum Star Rating	5			5			5			

