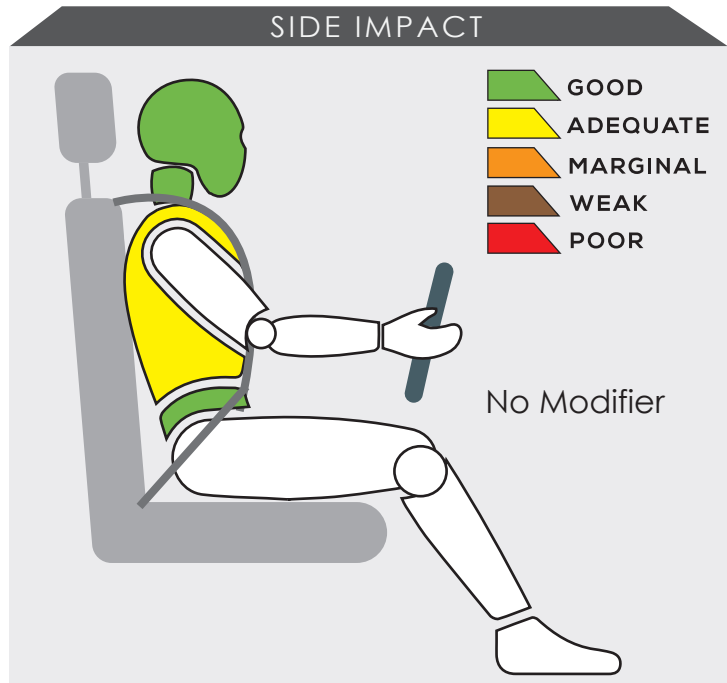
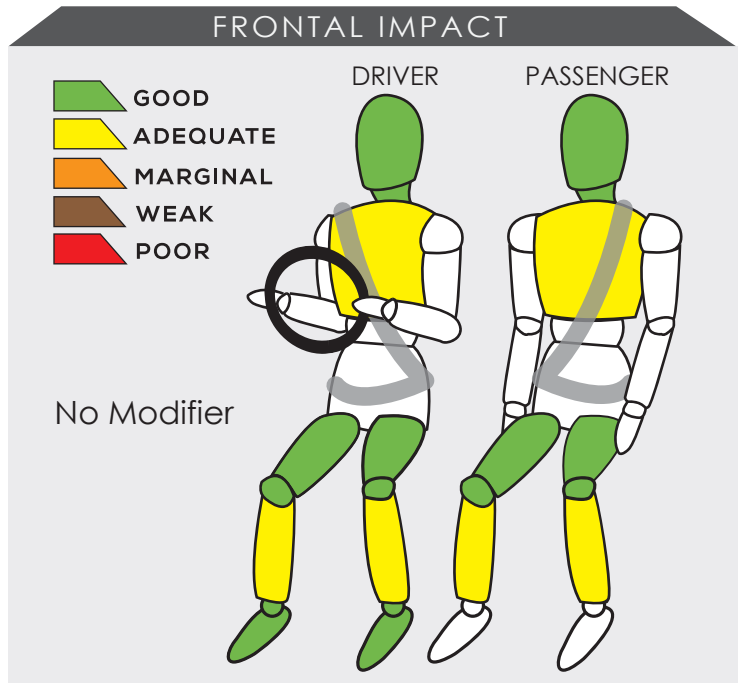


PERODUA MYVI



Variant 1300 G	Year Built 2017
Model Year 2017	Vehicle Category HATCHBACK
Engine Capacity 1.3 L	Kerb Mass 955 kg
No. of Airbags 4	Test Lab JARI

TESTED VARIANT ORIGIN	MALAYSIA	FOR	MALAYSIA
OTHER ASEAN PRODUCTION (ALL VARIANTS)	-	FOR	-



The passenger compartment held its shape well in the frontal offset test. The driver's chest and leg protection were acceptable. However, there was a slight risk of injury to both passenger's legs.

An adequate protection was provided to the driver in the side impact test. Nevertheless, there was a slight risk of serious chest injury. The performance of HPT was confirmed with additional deployment test and its score was determined based on Fitment Rating System.

SAFETY ITEMS (PASSIVE)

ITEMS		COUNTRIES										
Airbags	Driver	NS	NS	NS	NS	S	NS	NS	NS	NS	NS	
	Passenger	NS	NS	NS	NS	S	NS	NS	NS	NS	NS	
	Side (2)	NS	NS	NS	NS	S	NS	NS	NS	NS	NS	
	Curtain (2)	NS	NS	NS	NS	O	NS	NS	NS	NS	NS	
Seatbelts	Retractor Pre-tensioner & Load Limiter for Driver	NS	NS	NS	NS	S	NS	NS	NS	NS	NS	
	Retractor Pre-tensioner & Load Limiter for Passenger	NS	NS	NS	NS	S	NS	NS	NS	NS	NS	

S: Standard on all variants, O : Optional on base; Standard on higher variants, X : Not available, TBA : To be advised, NS : Not sold



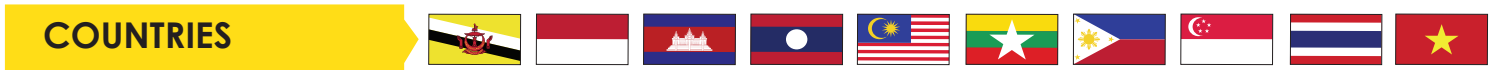
DYNAMIC TEST ASSESSMENT			
18-MONTH-OLD CHILD		3-YEAR-OLD CHILD	
Restraint	: Britax Baby Safe ISOFIX	Restraint	: Britax Duo Plus
Facing	: Rearward Facing	Facing	: Forward Facing
Installation	: ISOFIX & Supportleg	Installation	: ISOFIX & Top Tether
Frontal Impact	: 8.00	Frontal Impact	: 6.79
Side Impact	: 4.00	Side Impact	: 4.00
Total Performance	: 12.00	Total Performance	: 10.79

CRS INSTALLATION ASSESSMENT

CRS	DIRECTION	SEAT POSITION						
		FRONT	2ND ROW			3RD ROW		
		PASSENGER	LEFT	CENTRE	RIGHT	LEFT	CENTRE	RIGHT
Maxi Cosi Cabriofix	Rwd	EXEMPT	PASS	FAIL	PASS	N/A	N/A	N/A
Combi Malgot	Rwd	EXEMPT	PASS	PASS	PASS	N/A	N/A	N/A
Combi Malgot	Fwd	PASS	PASS	PASS	PASS	N/A	N/A	N/A
Combi Buon Junior Air	Fwd	PASS	PASS	FAIL	PASS	N/A	N/A	N/A
Britax Baby Safe Plus ISOFIX Base	Rwd	EXEMPT	PASS	EXEMPT	PASS	N/A	N/A	N/A
Maxi Cosi Milofix	Rwd	EXEMPT	PASS	EXEMPT	PASS	N/A	N/A	N/A
Maxi Cosi Milofix	Fwd	EXEMPT	PASS	EXEMPT	PASS	N/A	N/A	N/A
Britax Duo Plus	Fwd	EXEMPT	PASS	EXEMPT	PASS	N/A	N/A	N/A
Britax KidFix XP	Fwd	EXEMPT	PASS	EXEMPT	PASS	N/A	N/A	N/A
Britax Baby Safe Plus ISOFIX Base*	Rwd	EXEMPT	PASS	EXEMPT	PASS	N/A	N/A	N/A
Britax Duo Plus*	Fwd	EXEMPT	PASS	EXEMPT	PASS	N/A	N/A	N/A

PASS : Install without problem, FAIL : Safety critical problem, EXEMPT : Installation not allowed, N/A : Not available

*Manufacturer's selection



Effective Braking & Avoidance

ABS	NS	NS	NS	NS	O	NS	NS	NS	NS	NS
ESC	NS	NS	NS	NS	O	NS	NS	NS	NS	NS

Seatbelt Reminders

Driver	NS	NS	NS	NS	O	NS	NS	NS	NS	NS
Front Passengers	NS	NS	NS	NS	O	NS	NS	NS	NS	NS
Rear Passengers	NS	NS	NS	NS	O	NS	NS	NS	NS	NS

Blind Spot Technology

Nearside	NS	NS	NS	NS	X	NS	NS	NS	NS	NS
Offside	NS	NS	NS	NS	X	NS	NS	NS	NS	NS

Advanced Safety Assist Technologies

AEB City	NS	NS	NS	NS	O	NS	NS	NS	NS	NS
AEB Inter-Urban	NS	NS	NS	NS	X	NS	NS	NS	NS	NS
AEB VRU	NS	NS	NS	NS	X	NS	NS	NS	NS	NS
Lane Departure Warning System	NS	NS	NS	NS	X	NS	NS	NS	NS	NS
Forward Collision Warning System	NS	NS	NS	NS	X	NS	NS	NS	NS	NS
Lane Keep Assist	NS	NS	NS	NS	X	NS	NS	NS	NS	NS
Driver Attention Monitor	NS	NS	NS	NS	X	NS	NS	NS	NS	NS

O : Available, X : Not available, TBA : To be advised, NS : Not sold

OVERALL RATING

This is Perodua Myvi's third assessment by ASEAN NCAP. The first assessment it received 3-Star and under the second assessment, the result improved to 4-Star rating. The new Perodua Myvi now has additional safety features with four airbags as standard and curtain airbag as an option. In addition to the improved passive safety, it is also fitted with active safety features by extending the Seatbelt Reminder System to rear passengers seats and Electronic Stability Control (ESC) as standard. It also introduced Autonomous Emergency Braking (AEB) in its higher variant. The All-New Perodua Myvi is eligible for 5-Star ASEAN NCAP and is now the most affordable car with AEB feature in Malaysia.

PERODUA MYVI 11 - 18 OCTOBER 2017 ASEAN NCAP COMPARISON	AOP			COP			SAFETY ASSIST			2017 - 2020 ASEAN NCAP RATING
	Item	Point	Max	Item	Point	Max	Item	Point	Max	
	ODB	14.79	16.00	FRONTAL	14.79	16.00	EBA	8.00	8.00	5
	SIDE	15.91	16.00	SIDE	8.00	8.00	SBR	6.00	6.00	
	HPT Evaluation	2.00	4.00	Installation	11.35	12.00	BST	-	2.00	
				Vehicle Based	9.00	13.00	Advanced SATs	1.00	2.00	
Score		32.71	36.00		43.14	49.00		15.00	18.00	OVERALL SCORE 88.27
Normalized Score		0.91			0.88			0.83		
Weighting		50%			25%			25%		
Weighted Score		45.43			22.01			20.83		
Maximum Star Rating		5			5			5		

